

“How to transform
the overhead line
supports into a
decorative,
attractive and
artistic
monument”

Elena Paroucheva



Summary:

I) Introduction

II) Artist's concept

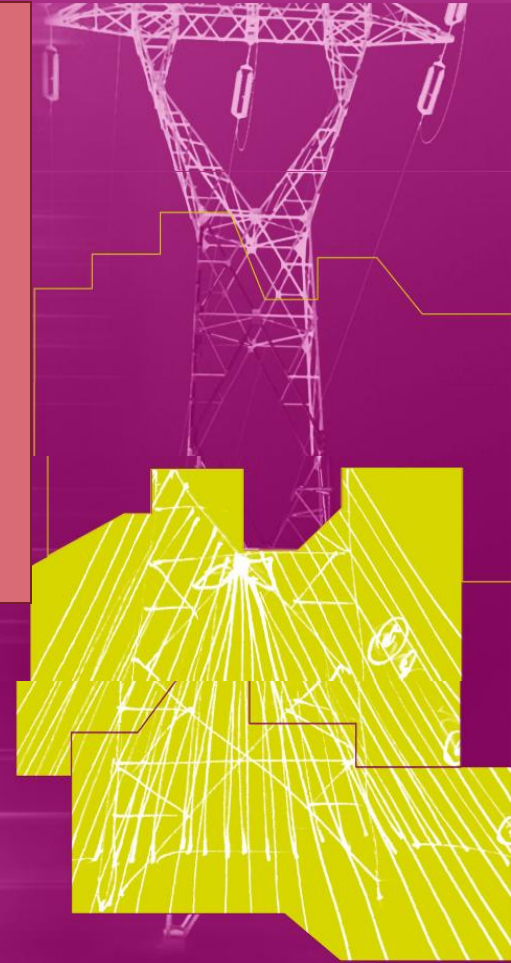
III) "Source" of Amneville , France

1) The monumental installation "SOURCE" key figures, context, project, symbols, making of.

3) "Source" a work recognized internationally.

4) The opinion of residents and visitors: Before artwork, during the building and now.

IV) What is a tower - artwork can bring? And to whom



I) Introduction

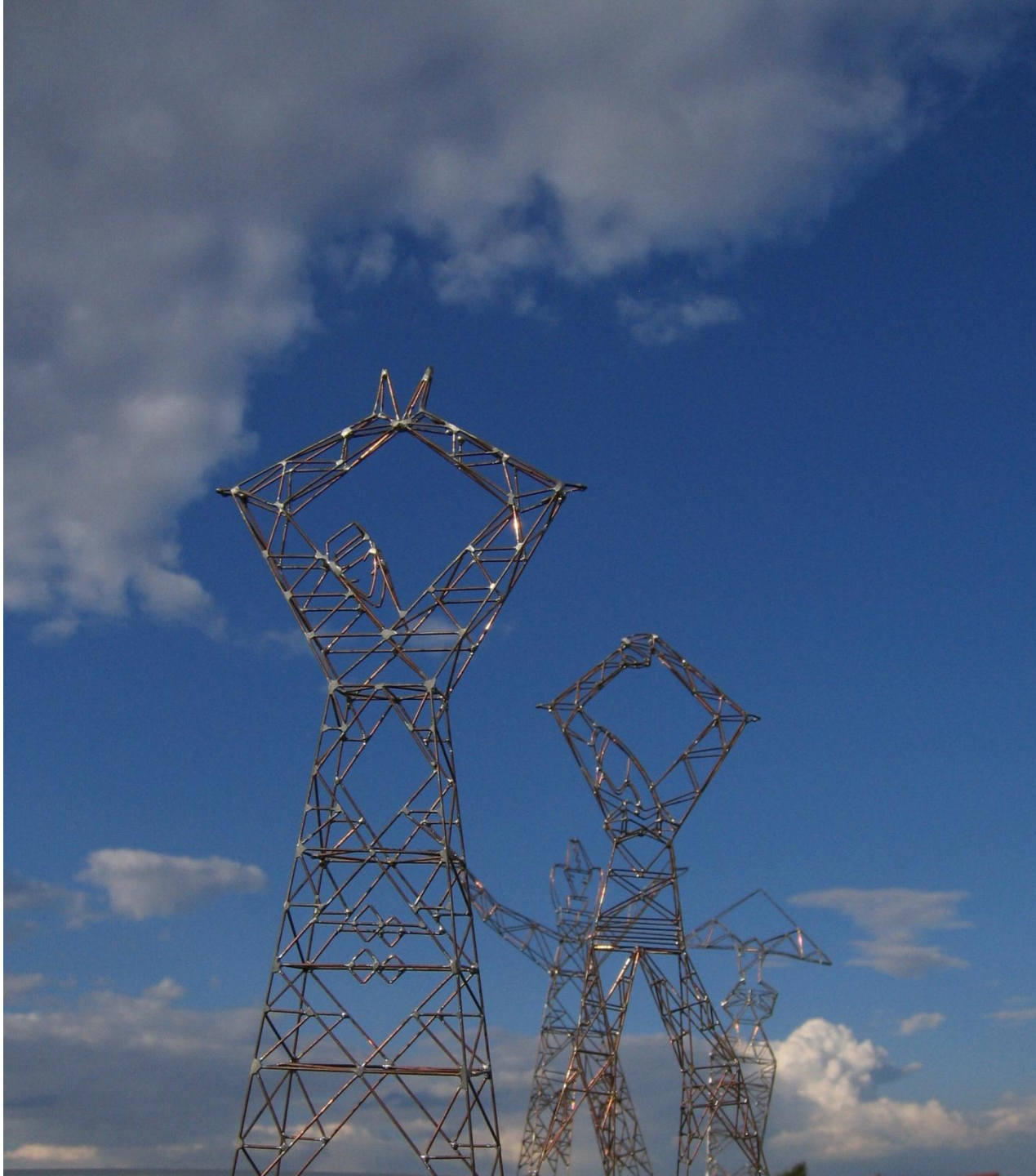
Three questions in Santiago:

- The introduction of new corridors for transmission lines.
- The sustainable power supply of large consumption & urban centres.
- The incorporation of non-conventional renewable energies to the Electrical Grid.

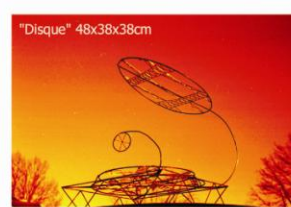


**The
introduction
of new
corridors for
transmission
lines:**

**Sculptures -
towers**

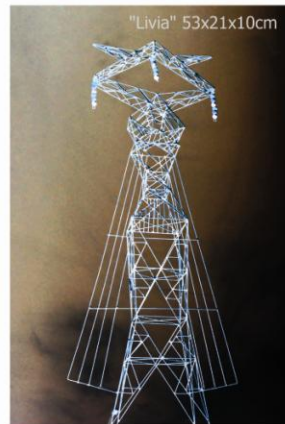
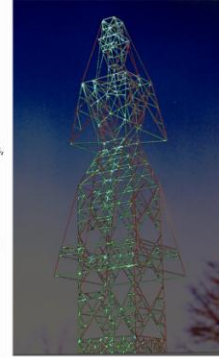
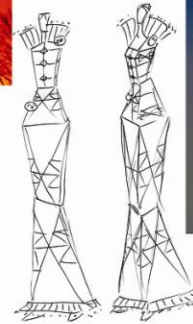


The introduction of new corridors for transmission lines.



Elena Paroucheva:
sculptures

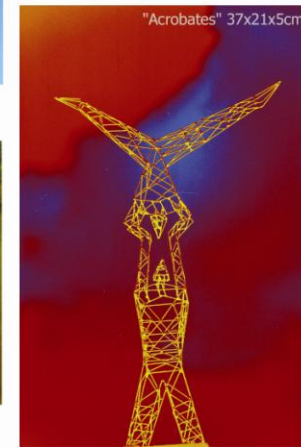
Autisme
"Licia"



Les Sculptures Haute Tension (SHT) sont basées sur la construction métallique de mobilier industriel. Elles restent dans cette construction symbolisant notre époque. Par contre elles proposent de nouvelles formes avec l'idée d'une insertion dans l'environnement comme support des antennes – relais, des pylônes de haute tension, support d'éclairage... ou tout simplement comme sculptures.



"Menhirs" 75x200x200cm



The sustainable power supply of large consumption & urban centres

My idea is to intervene to emphasize the networks:

Sculptures

Les projets pour les espaces publics cherchent à améliorer l'environnement dans les milieux urbains et ruraux.
Ils développent l'insertion des œuvres d'art, mais aussi la création des nouvelles formes dans les constructions métalliques et architecturales.
Ils visent les antennes – relais de télécommunication, les pylônes de transport d'électricité, les ponts, les passerelles, les supports d'éclairage de stades, fontaines, mats, réverbères...



"Cathédrale" Mise en situation



"Personnages" Projet pour La Défense



"Disque"



"Dea"



"Bendida"

elena paroucheva
espaces publics - projets



"Eclairage - stade" dessin



"Elle" Mise en situation

© Elena Paroucheva, ADAGP

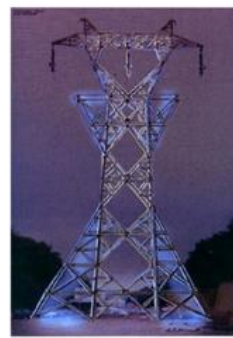
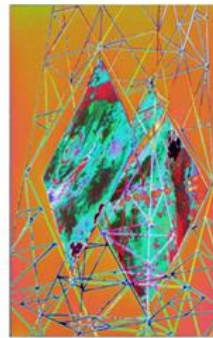


"Acrobates" Mise en situation

**The sustainable
power supply of
large
consumption &
urban centres**

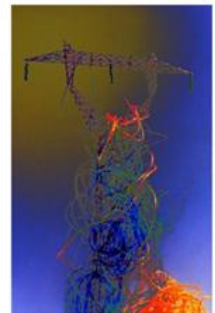
My idea is to
intervene to
emphasize the
networks:

Art installations.

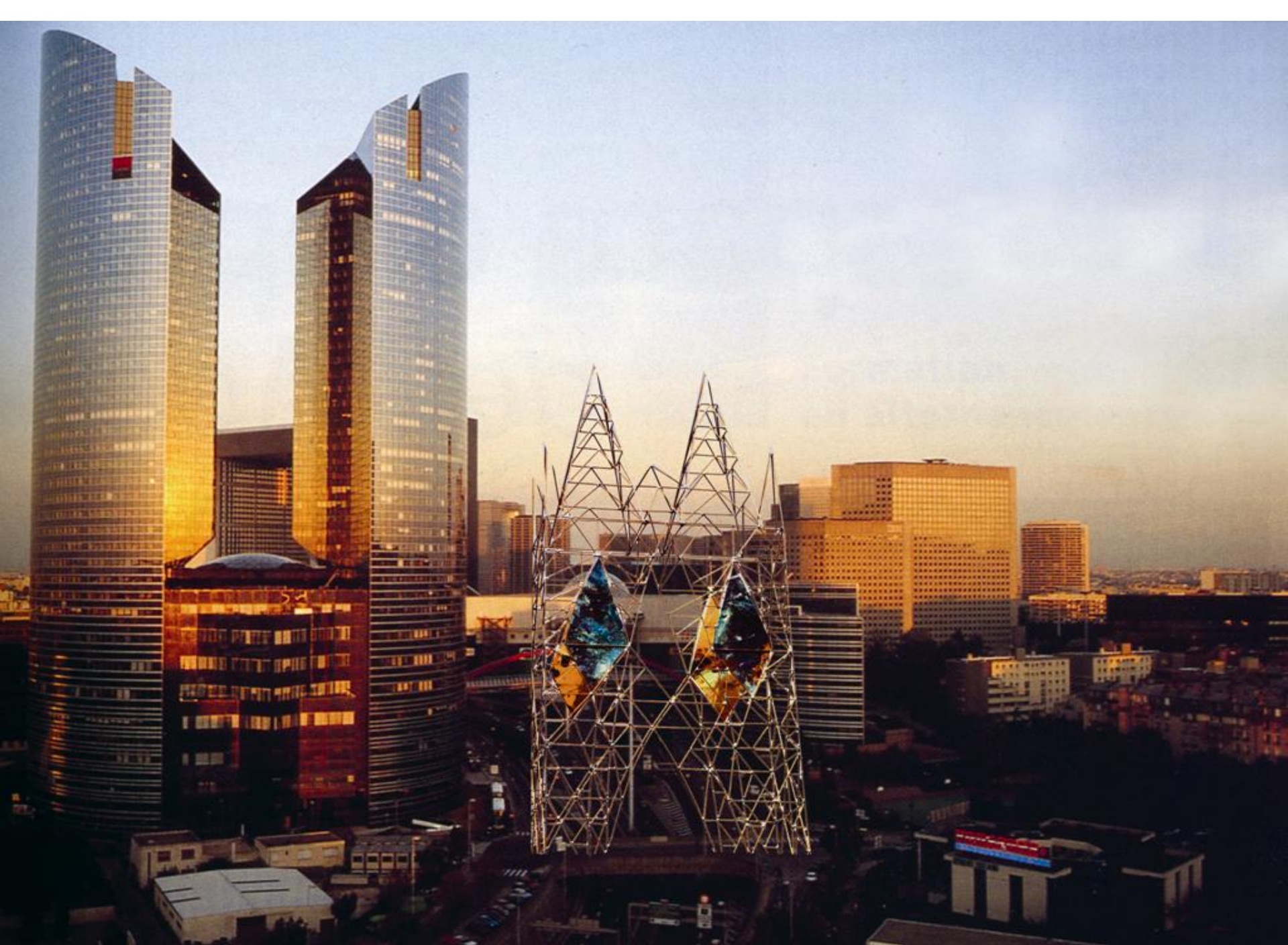


IHT - installations/ haute tension

elena paroucheva
photos des maquettes







urban centres
sculptures and art
installations.



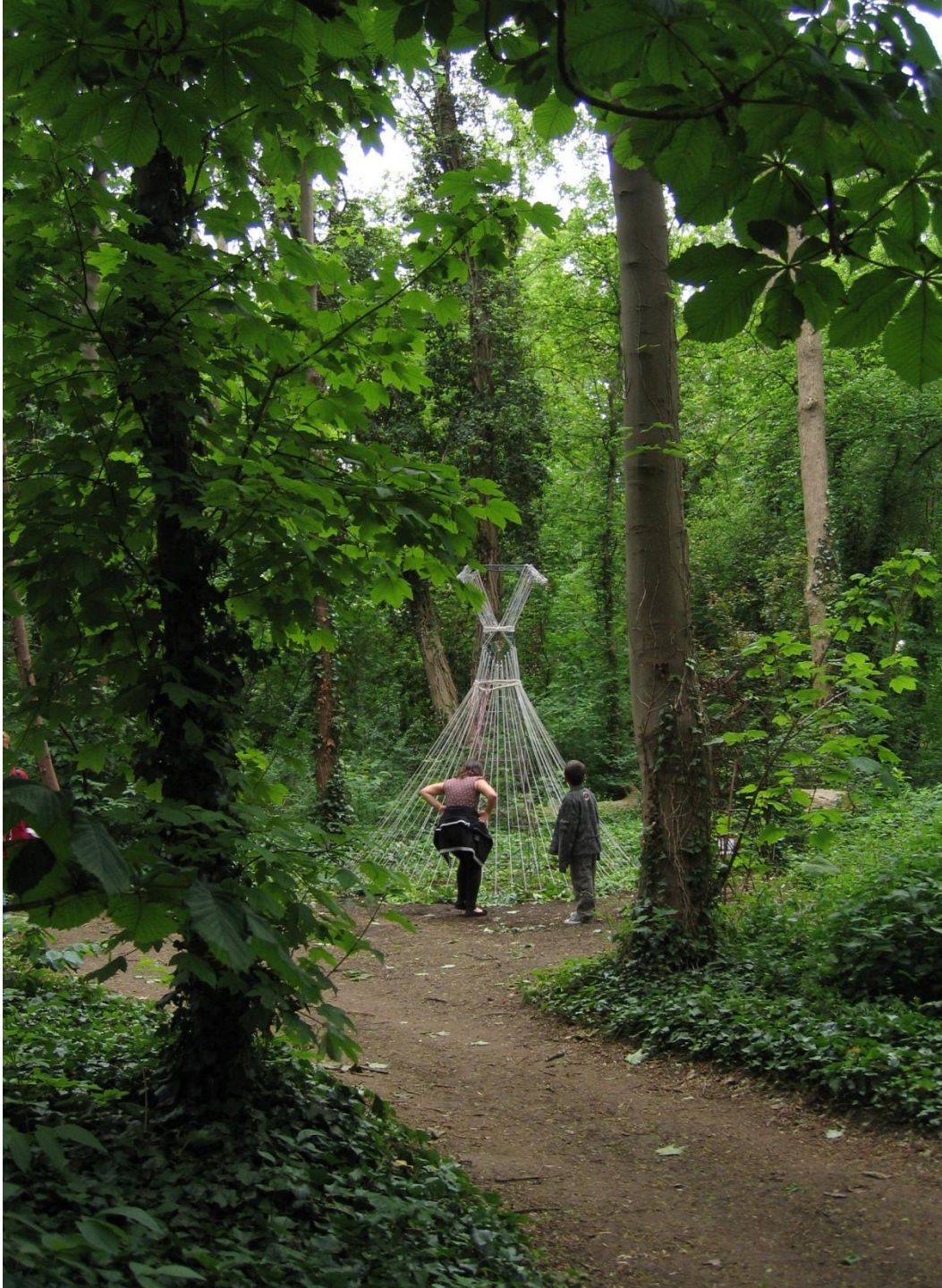


Rond point - Les Mureaux,
Ile de France

Sculpture "Oiseau"



Elena Paroucheva: Projets pour antennes - relais, pylônes et éoliennes





The incorporation of non-conventional renewable energies to the Electrical Grid:



elena paroucheva
éoliennes - projets



Solutions for the integration of wind turbines and antennas relay on the supports of power lines:

Pylons artworks – multi support.



Les projets pour les éoliennes cherchent à améliorer l'environnement dans les milieux urbains et ruraux. Ils développent l'insertion des œuvres d'art, la création des nouvelles formes pour les éoliennes.

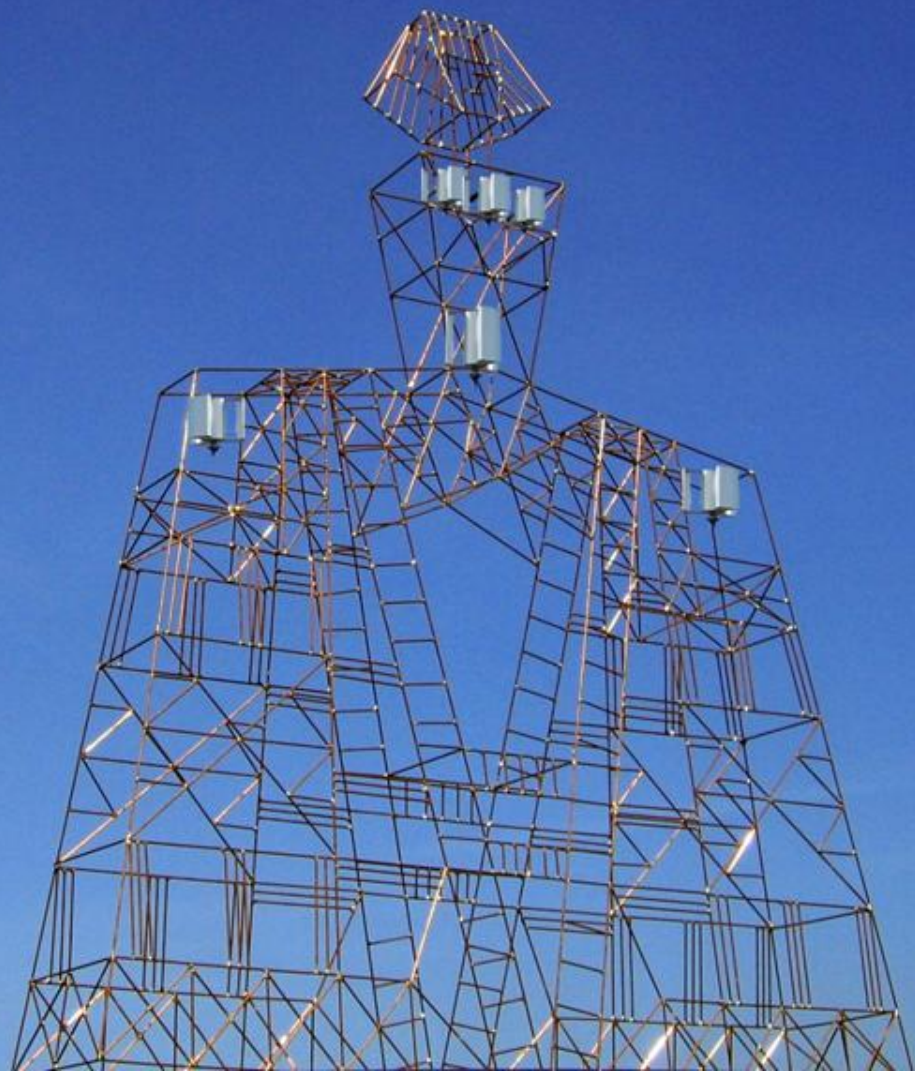


© Elena Paroucheva, ADAGP









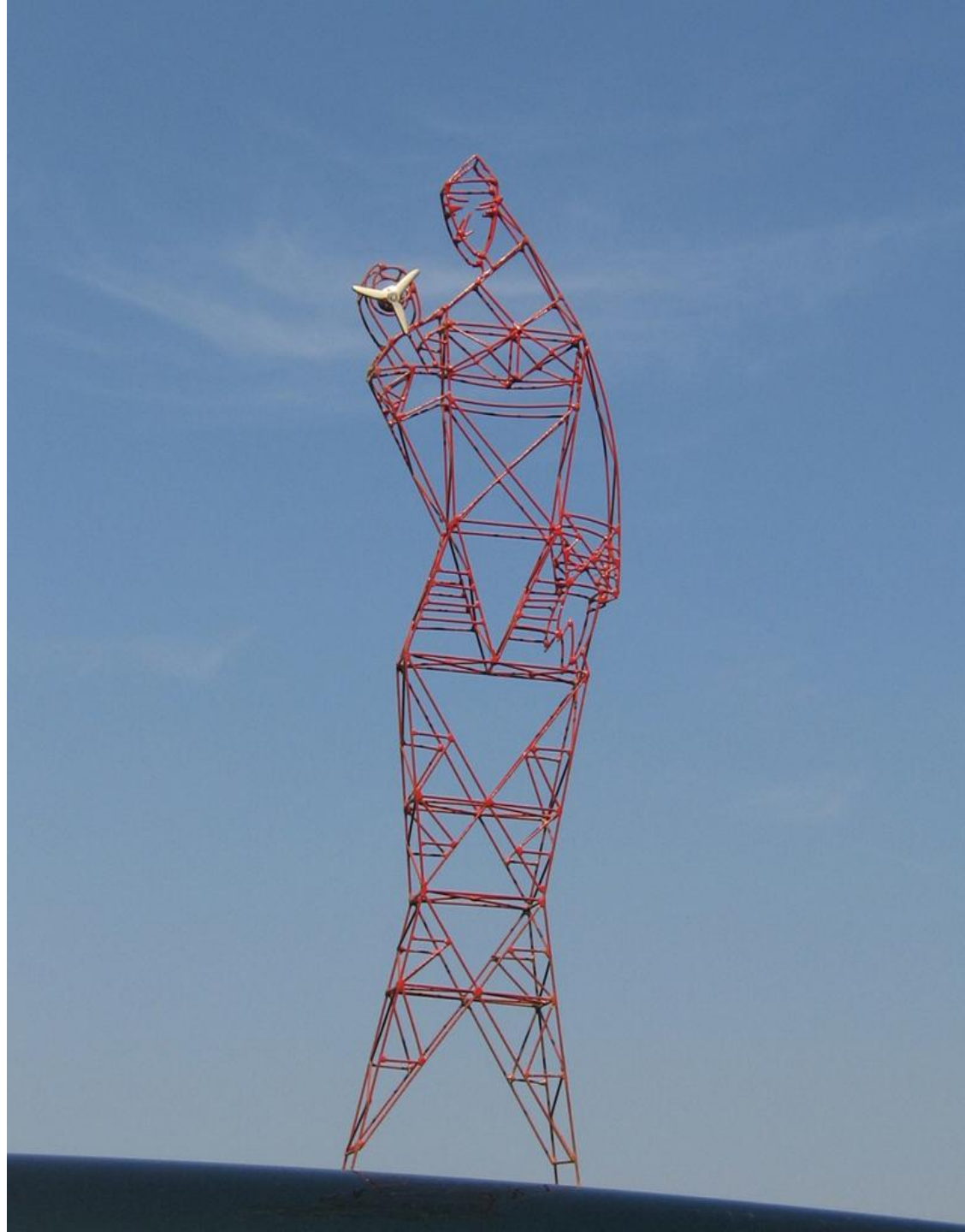




Photo d'une antenne - relais.



Installation autour de l'antenne.



Etude d'éclairage.

Projets pour antennes - relais dans un espace urbain.

elena paroucheva
antennes - relais dans l'environnement
installations

*Relais - pylônes de
lignes électriques*

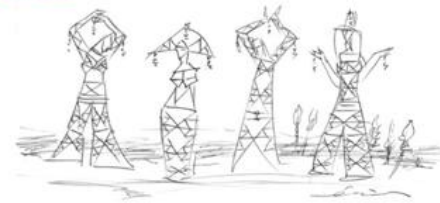


Photo:
antenne à proximité d'une autoroute.



Installation sur l'antenne existante.



Recherches d'éclairage.

Projets pour antennes - relais, installées le long de l'autoroute.



Photo - antenne sur l'autoroute 6.



Antenne - sculpture.



Recherches d'éclairage.

Projets pour antennes - relais, installées le long de l'autoroute.



elena paroucheva
antennes - relais dans l'environnement
sculptures

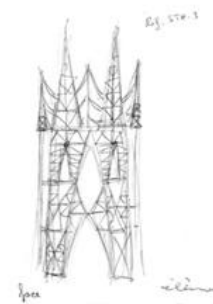


Photo « La Défense ».



Sculpture - antenne « Cathédrale ».



Etude d'éclairage.

Projets pour antennes - relais dans un espace urbain.

II) Artist's concept

My artworks involve the support of networks:

- Low, medium and high voltage power lines
- Renewable wind energy
- Antennas - relaying for mobile phones, radio ...
- Lighting – highways, stadiums, public spaces, etc.
- Bridges and footbridges
- Oil towers
- Urban furniture

Her are of two kinds:

Sculptures: For future buildings or replacement of existing ones.

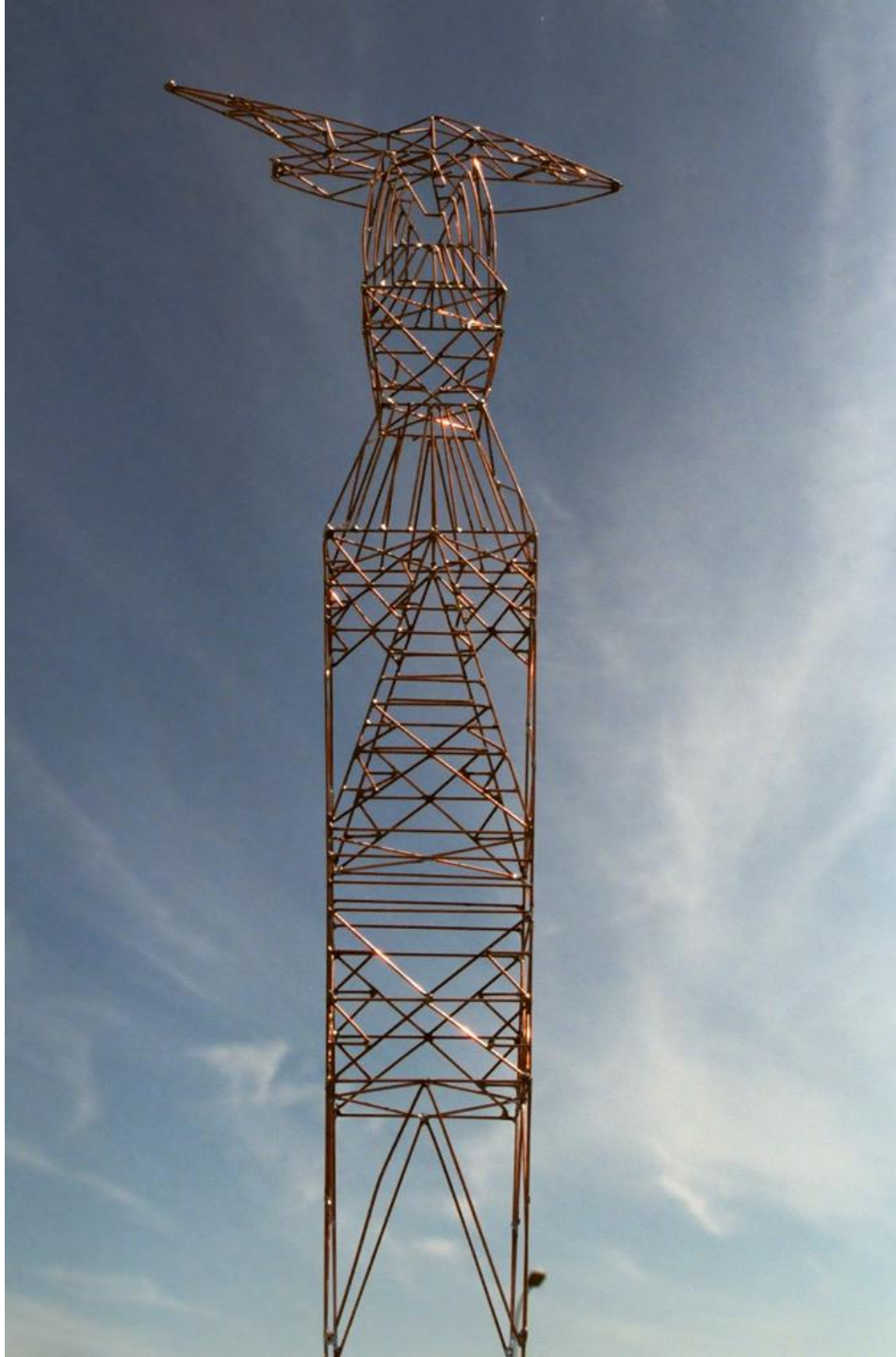
Art Installations - For existing constructions.



SHT Sculptures:

For future buildings
or replacement of
existing ones:

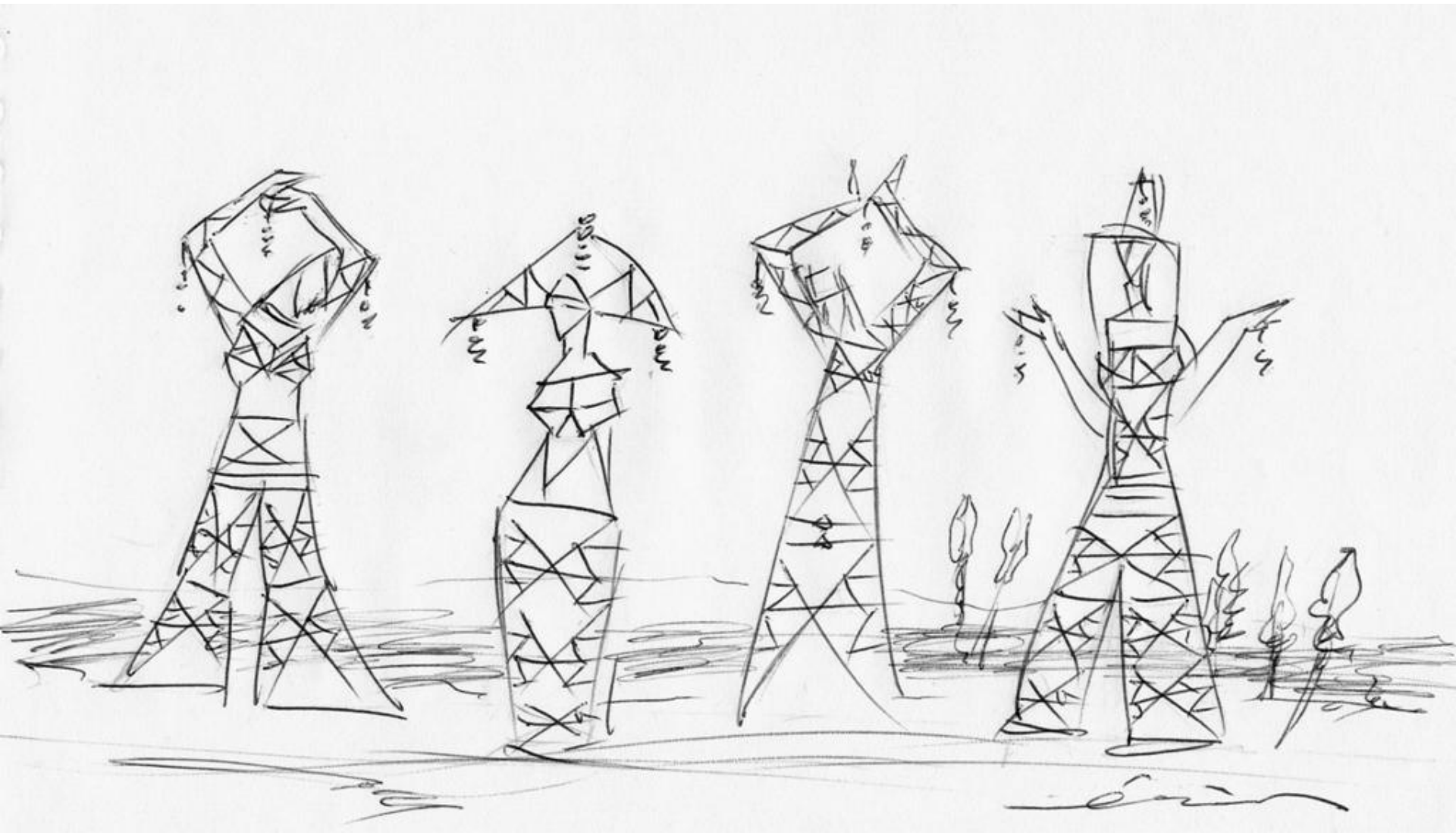
This way explores
new forms for
pylons to be
implanted in the
landscape, urban
and rural areas.



Sculptures use
"symbolically" the
same modules of
metallic
construction for the
realization of:

- pylons - sculptures,
- antennas -sculptures
- wind energy –
sculptures,
- lighting – sculptures

Sculptures - towers



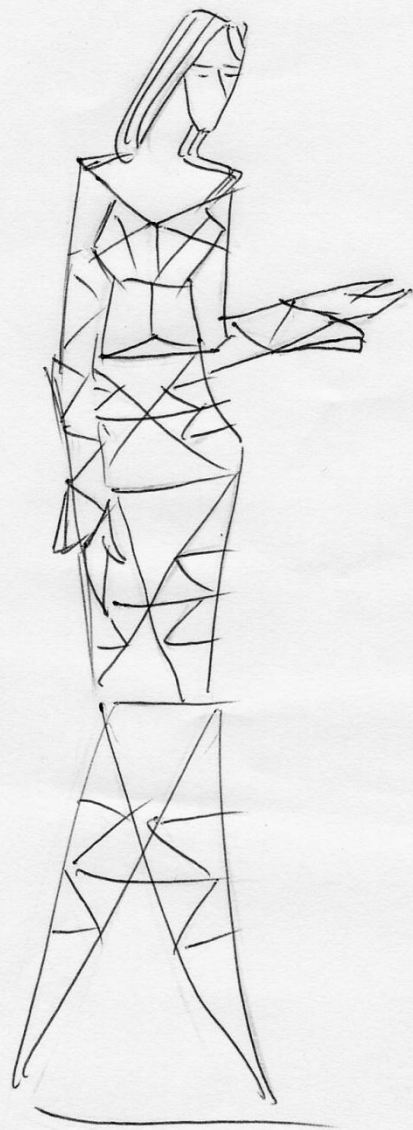


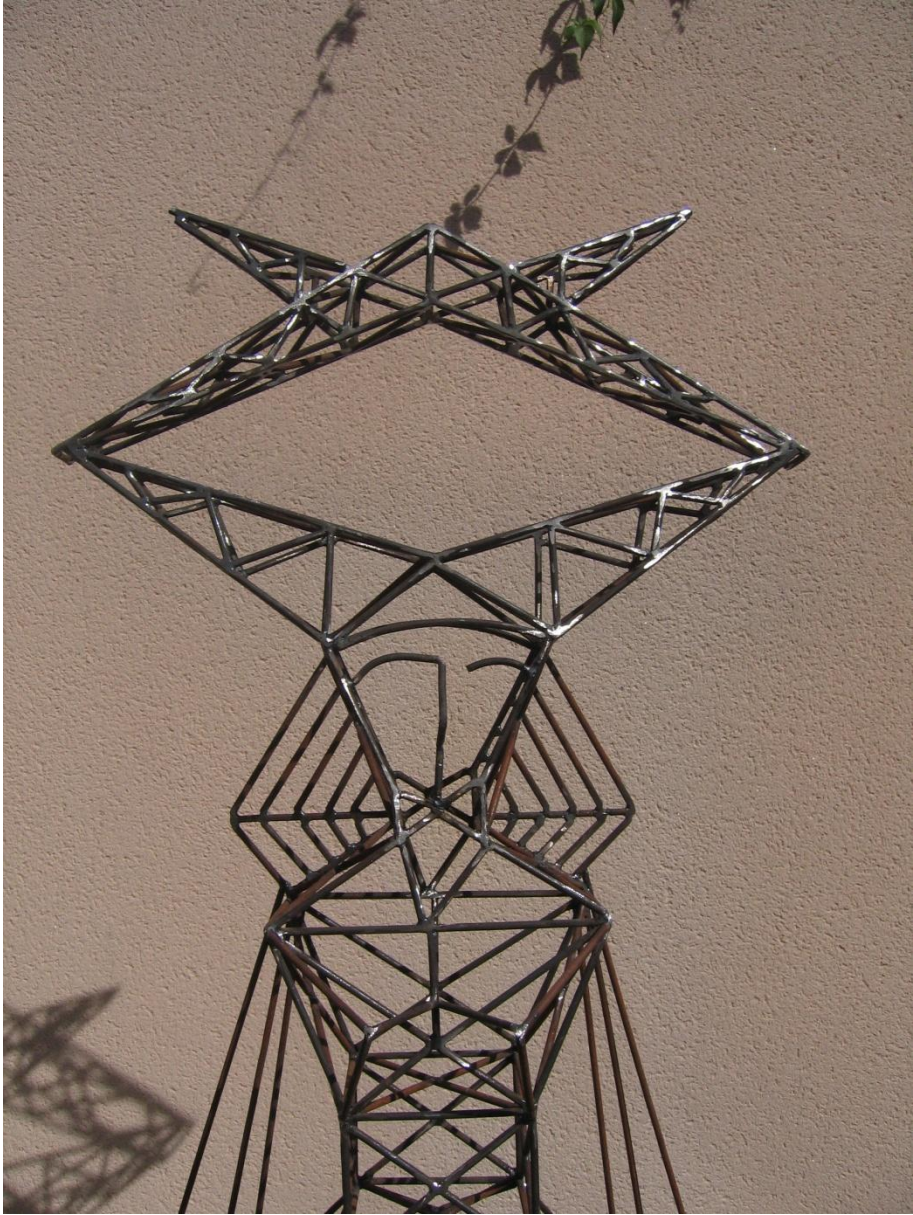


Mise en situation : Sculpture "Kalina"
La Défense, Tour Initiale
Elena Paroucheva

Tout droit réservé - Elena Paroucheva, ADAGP. Copie interdite sans autorisation de l'auteur.

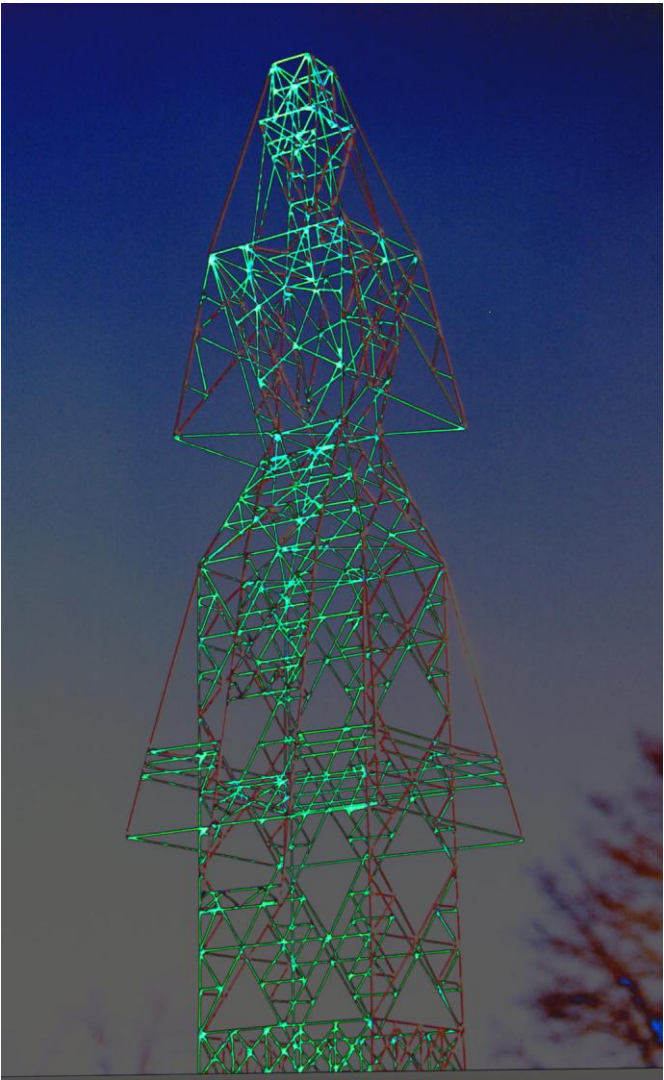
"Ondine"
Hautecor
55 cm.





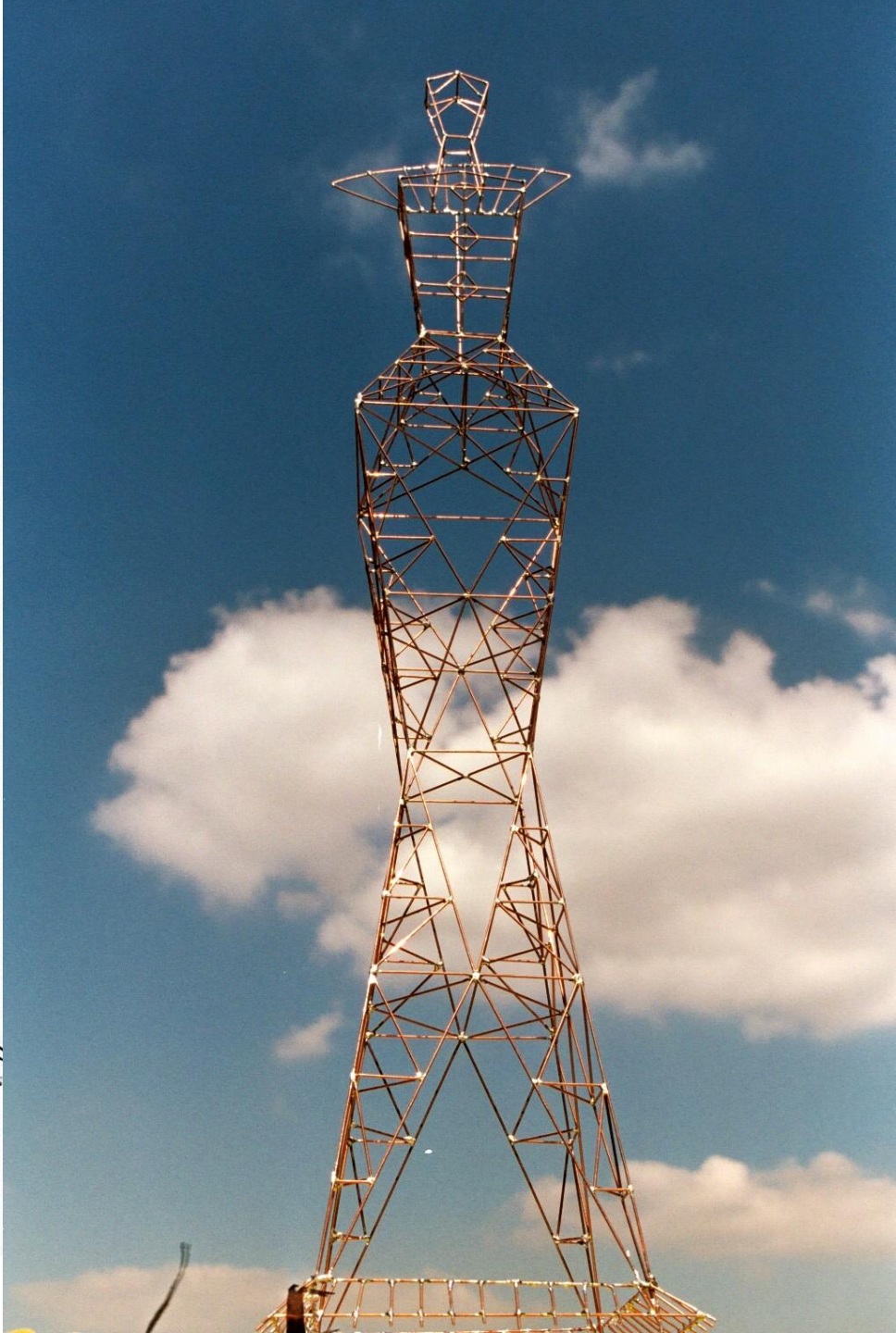
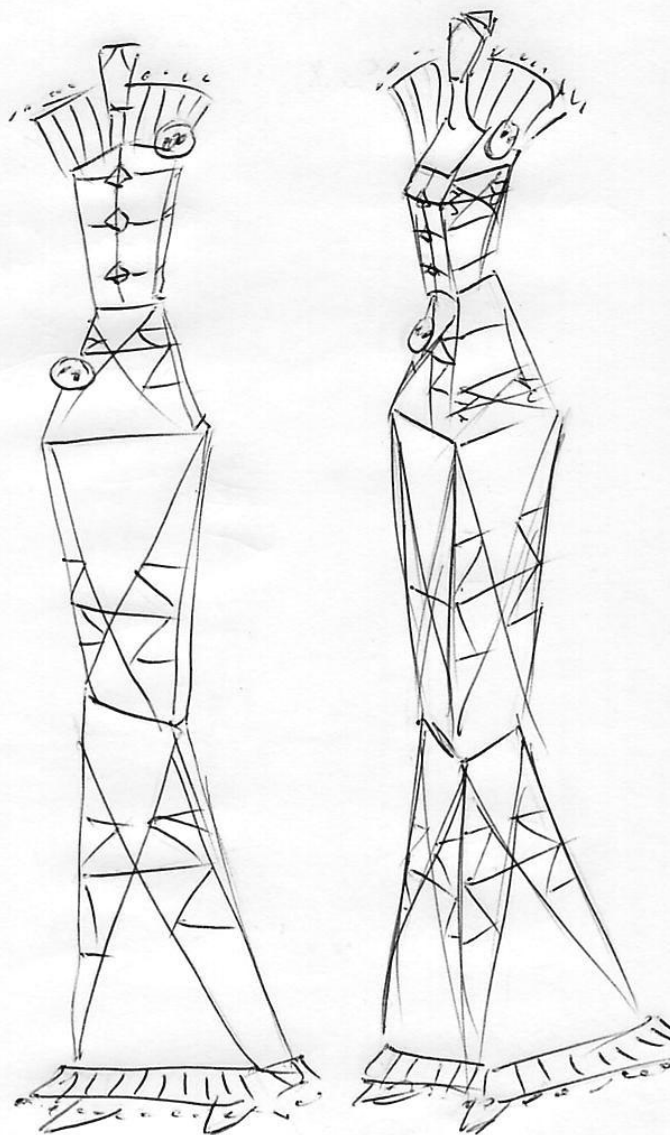


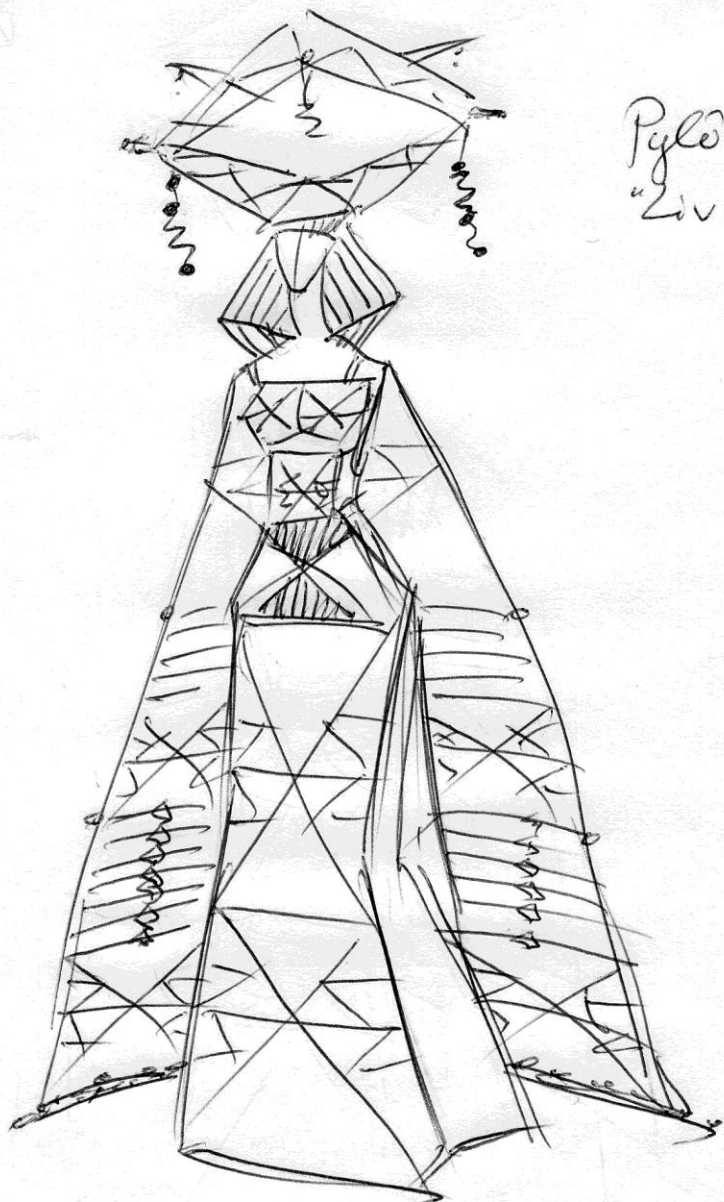




Antenne
"Dea"

elun

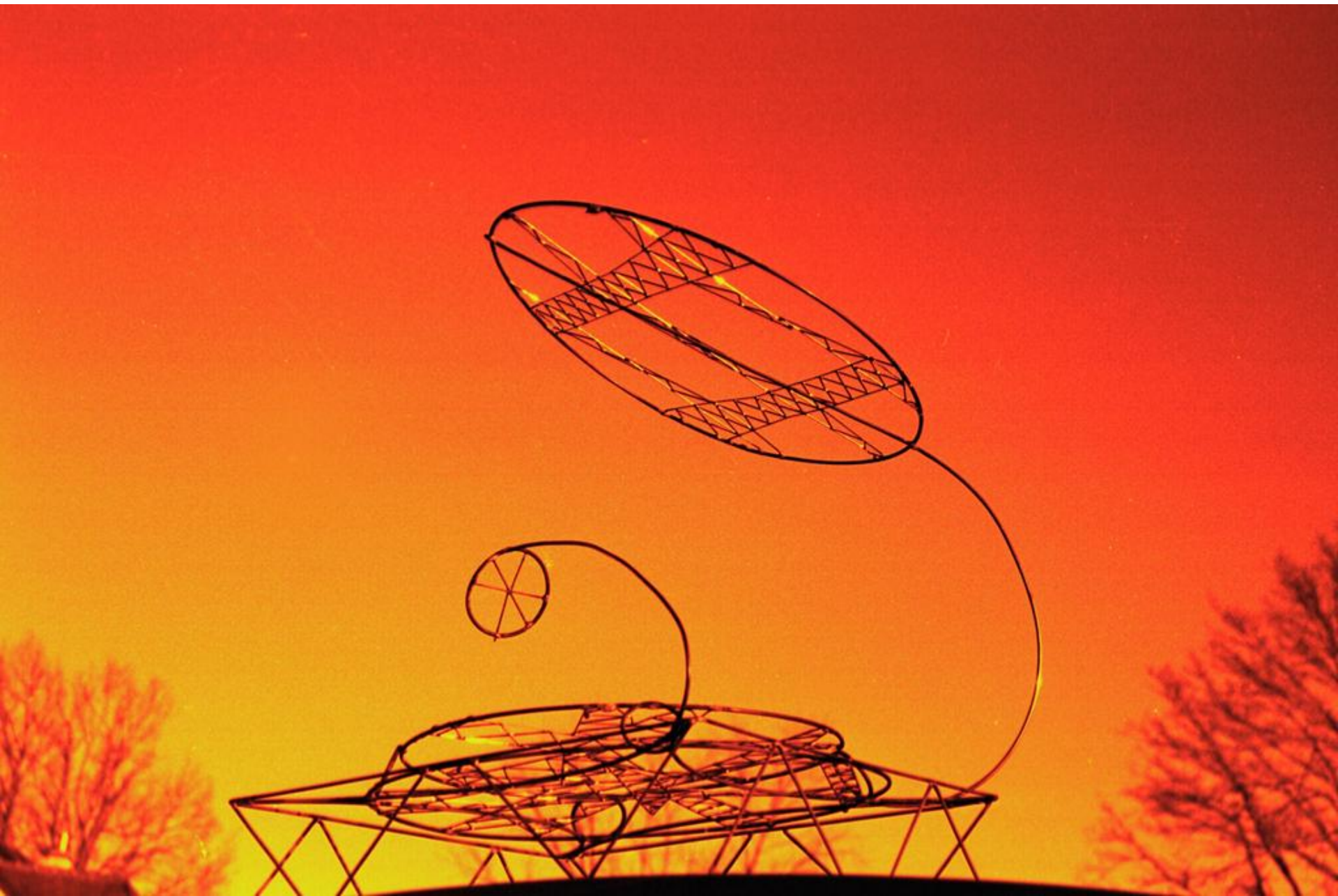


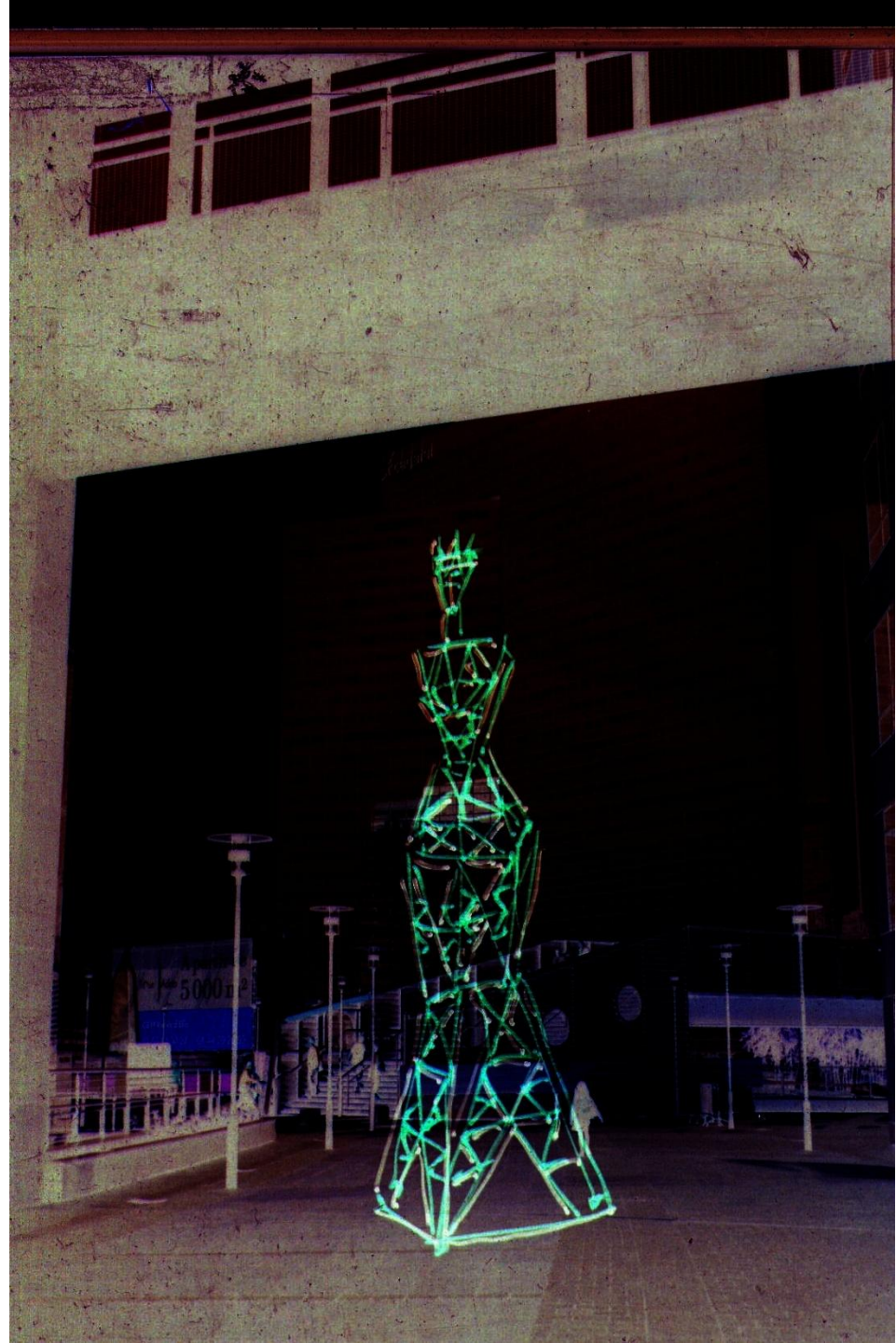


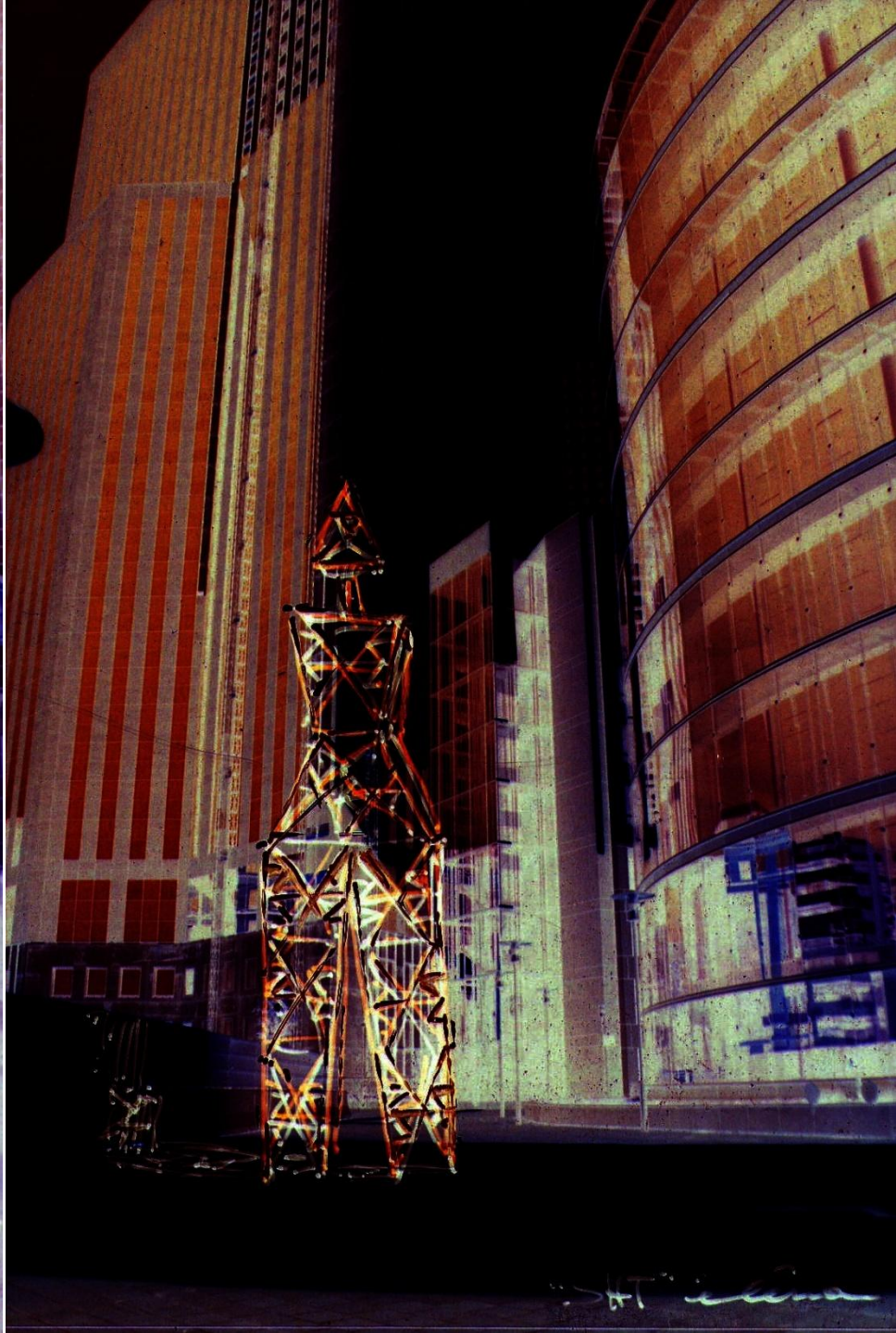
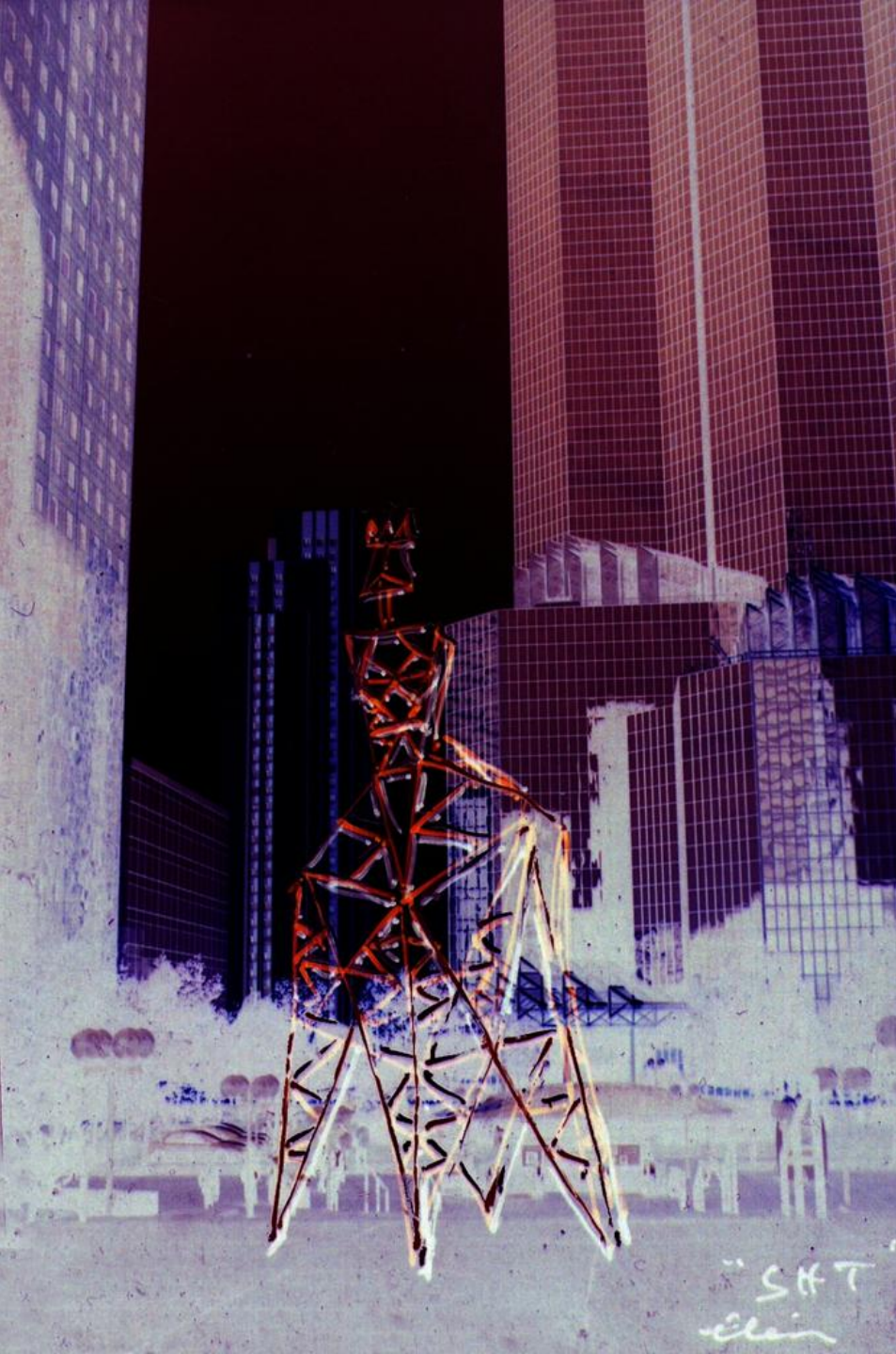
Pylône
"Zivier"





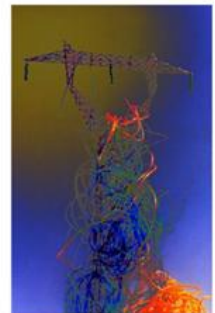
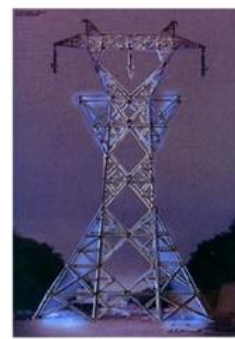
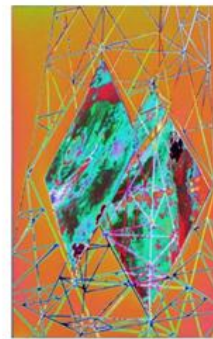






IHT Art Installations:

For existing constructions.

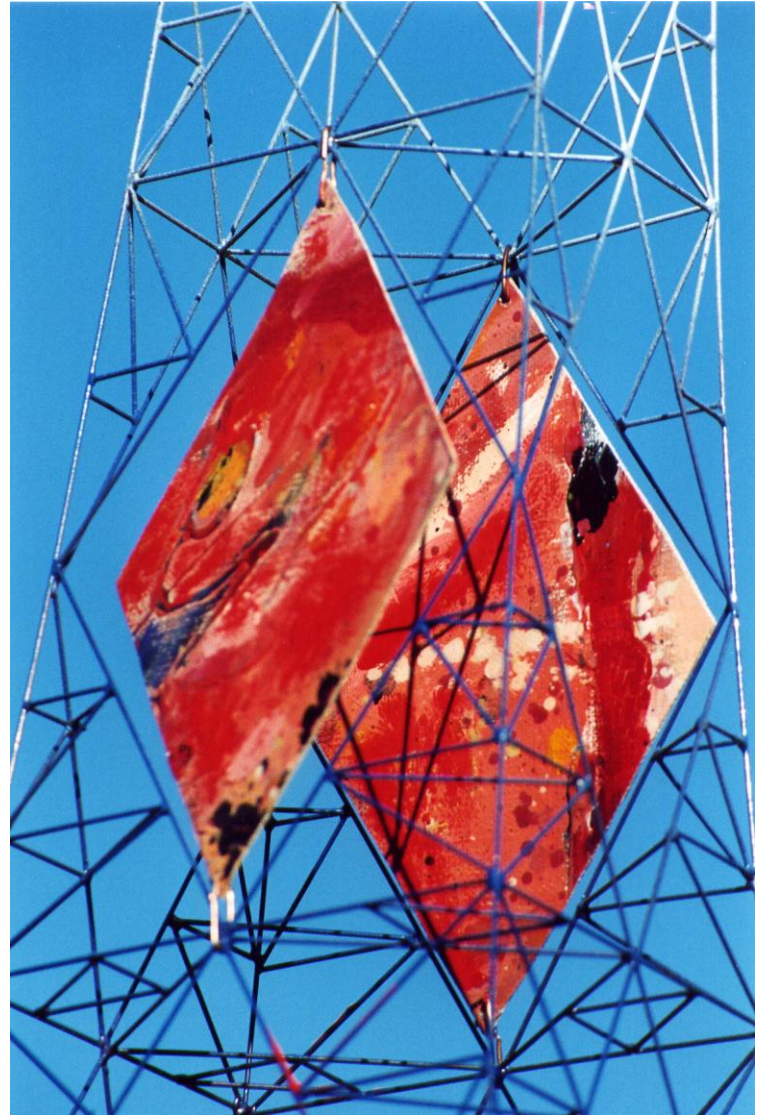


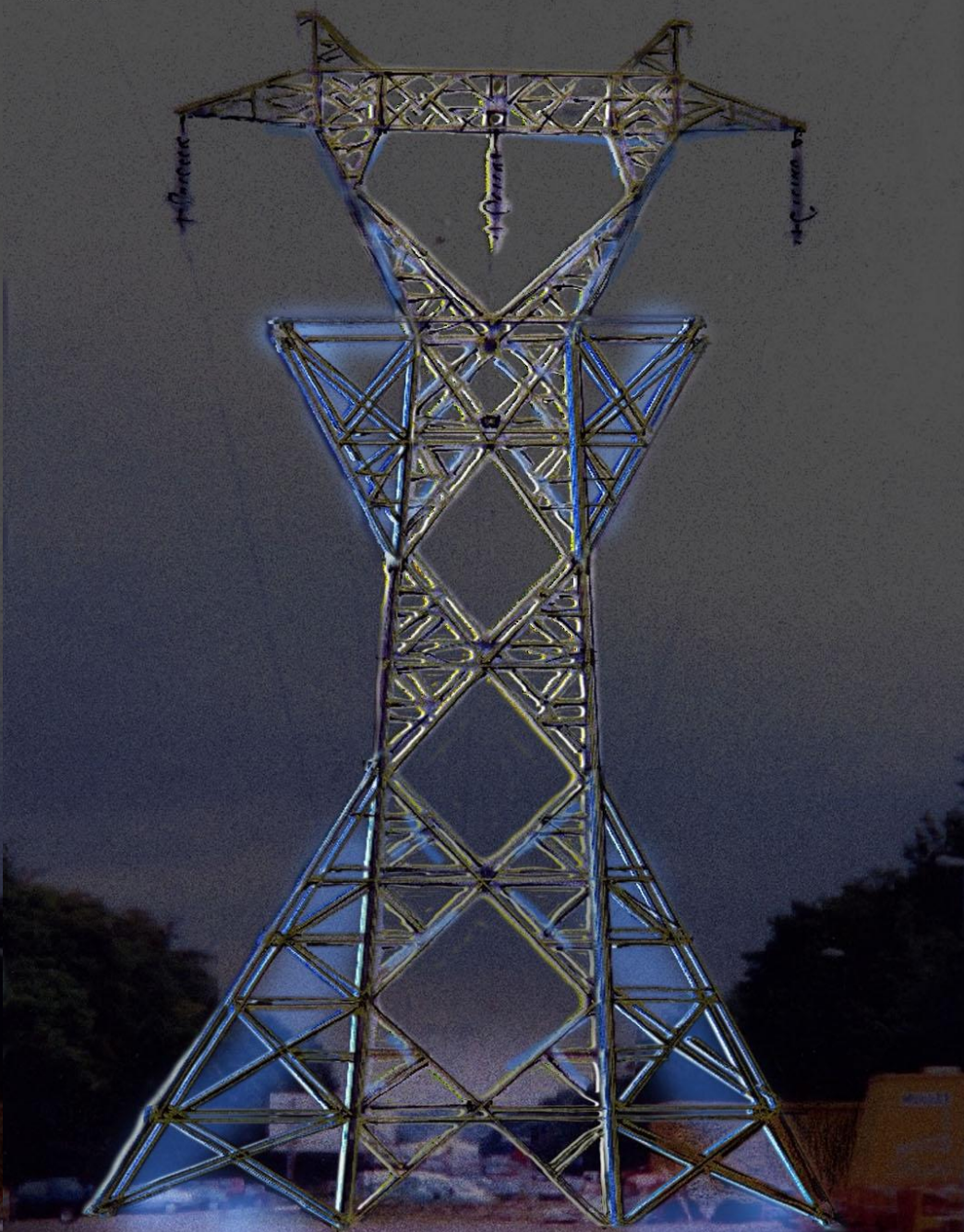
IHT - installations/ haute tension

elena paroucheva
photos des maquettes



This solution treats the transformation of existing building in the environment. They are investigated according to reception area and allow the modification of the visual aspect of the infrastructure into artistic works.

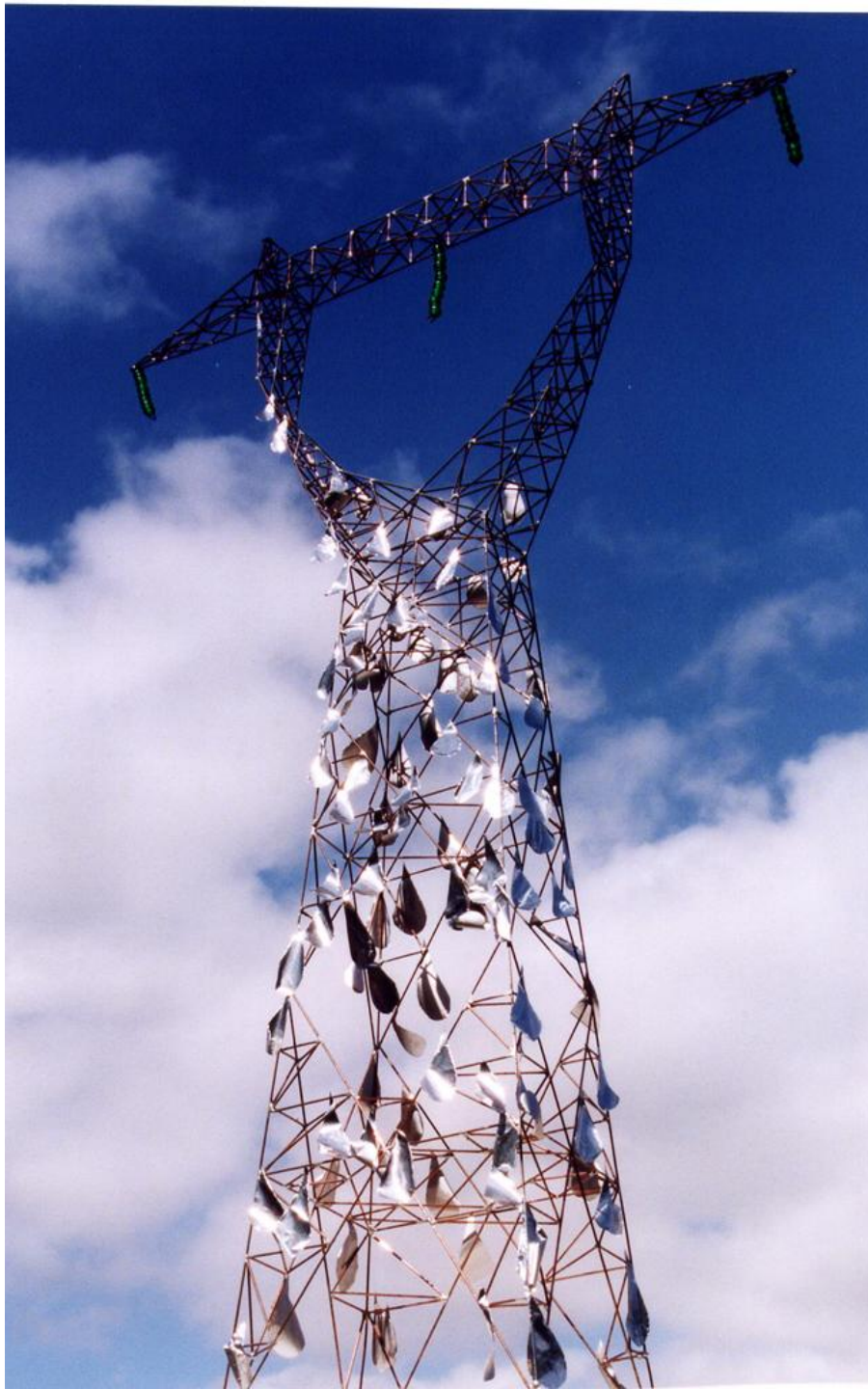


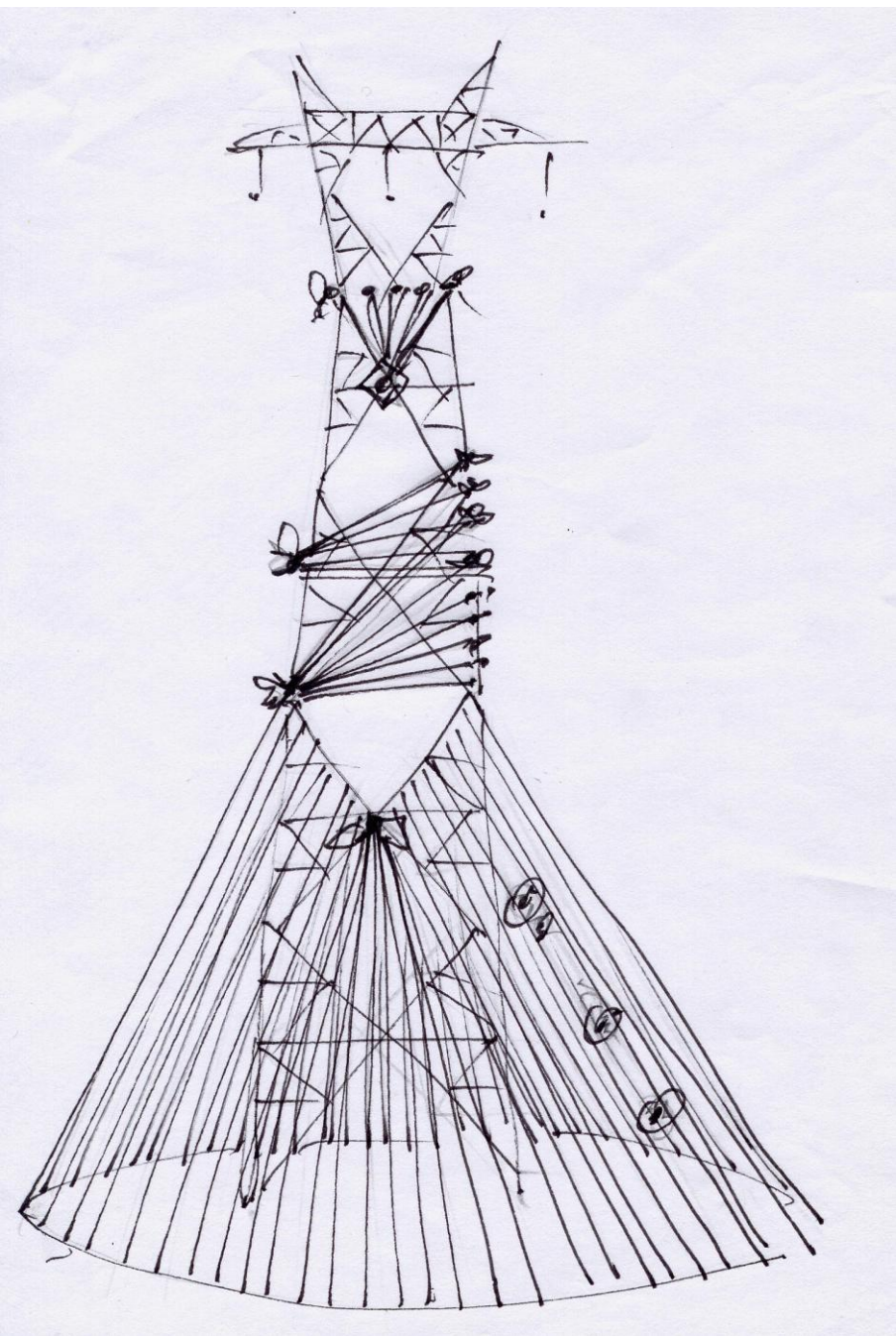


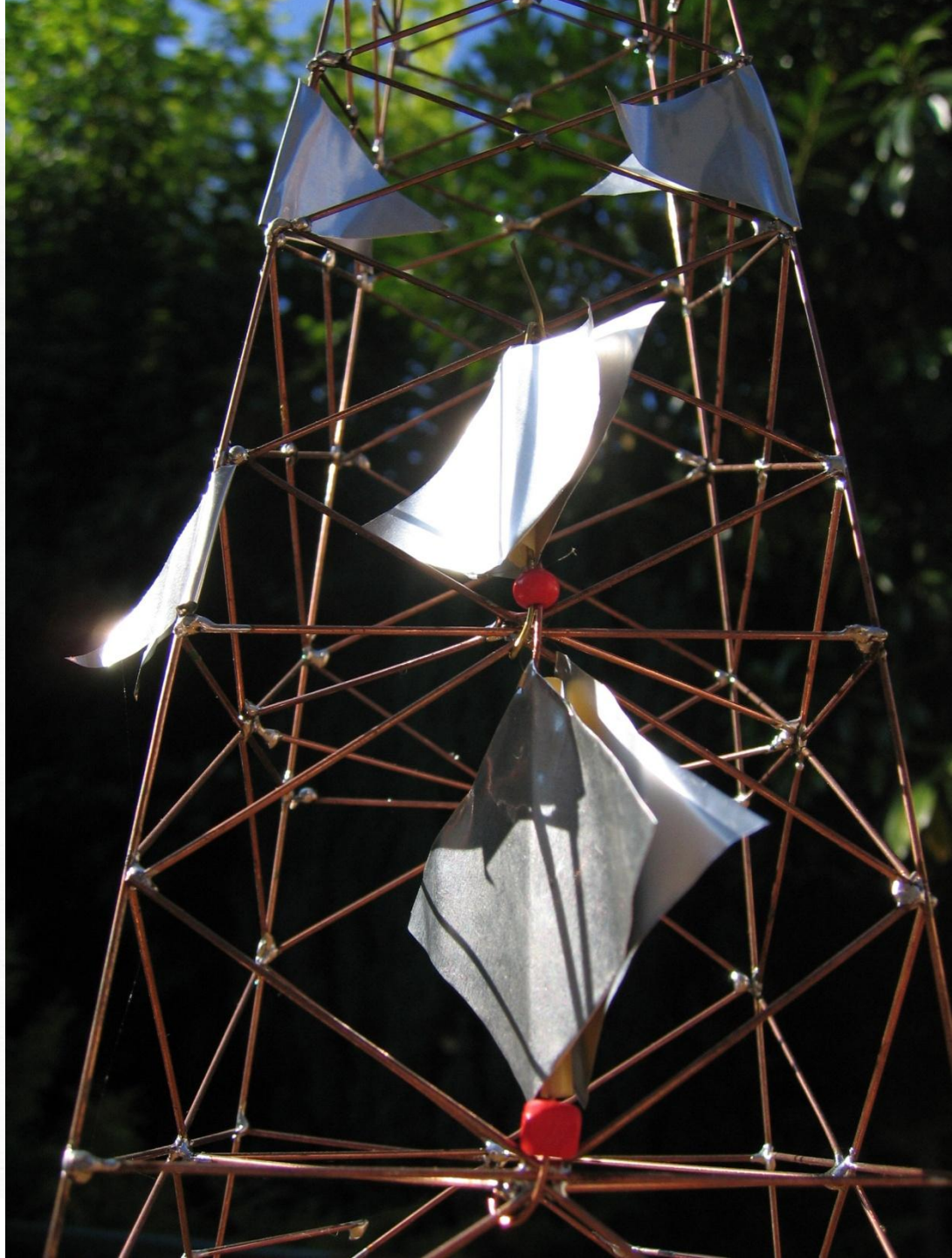
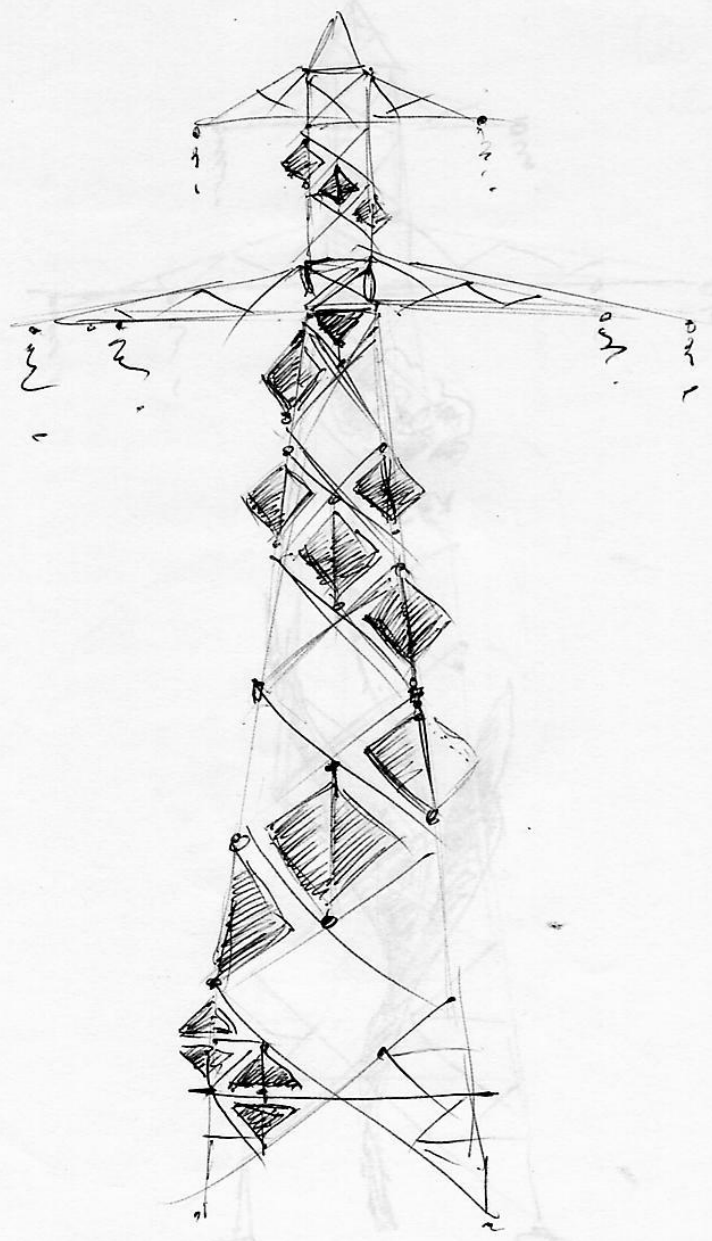


Hamerville les Thermaes
projet DUT - installation avec cordes
"L'art de l'énergie"

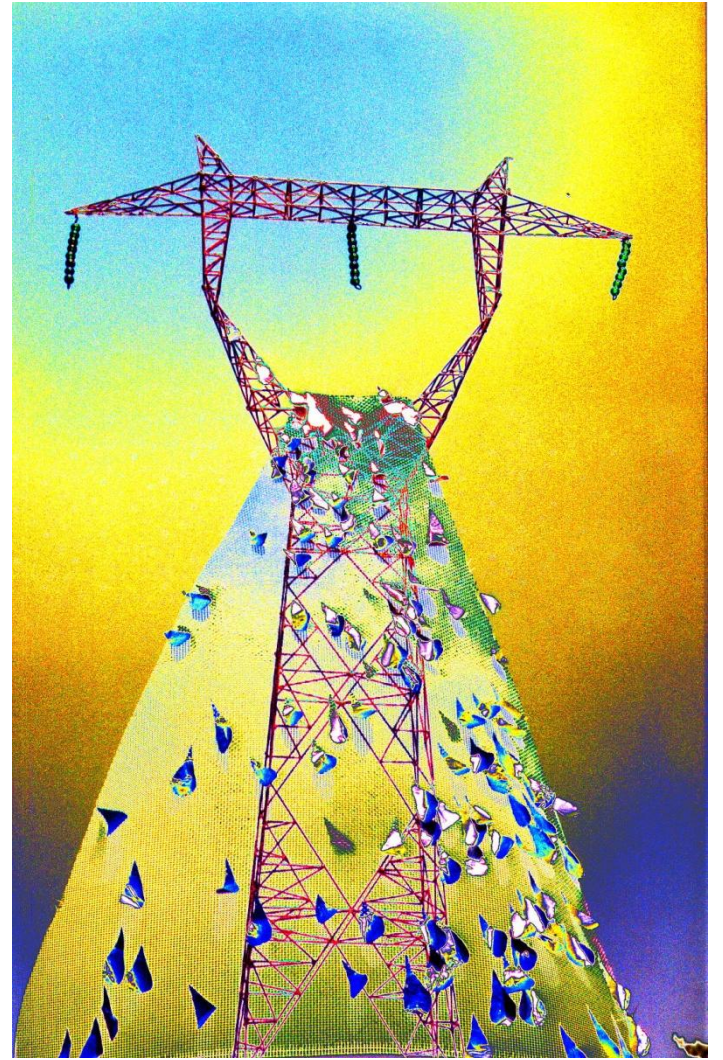
leina





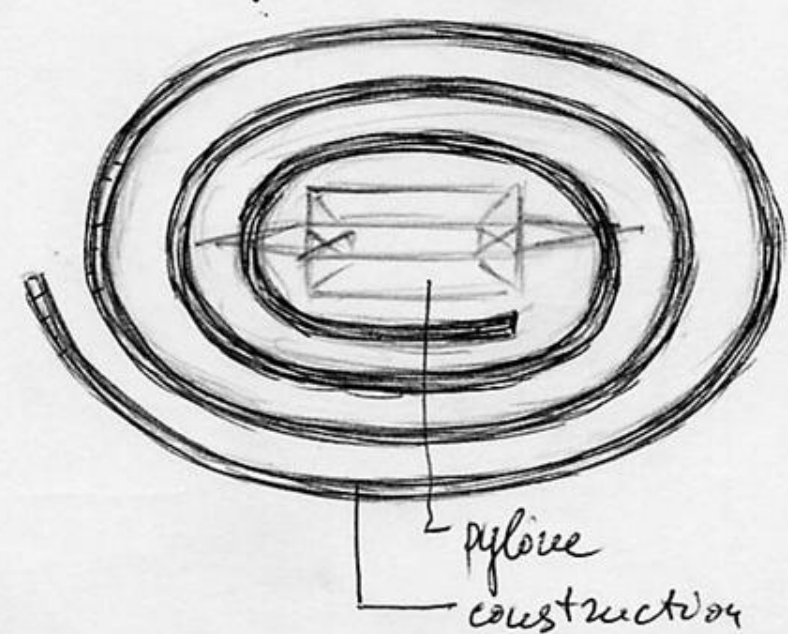








Vue du haut



"Paysage libre"
variante 2

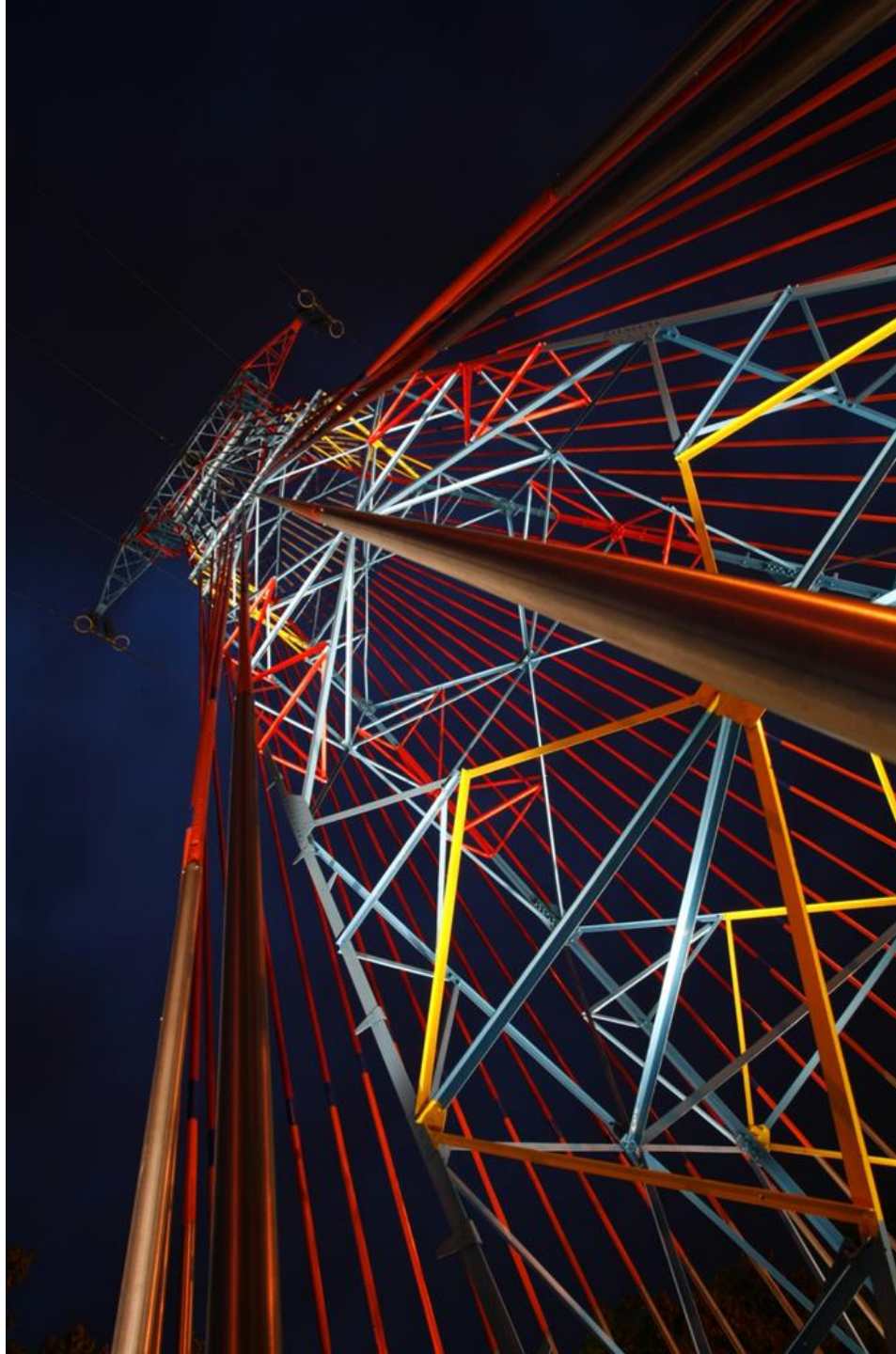
facettes miroirs

III) "Source" of Amneville

- 1) The monumental installation "SOURCE" key figures.
- 2) Genesis of the project: context, site, project, symbols, making of.
- 3) The opinion of residents and visitors: Before artwork, during the building and now.
- 4) "Source" a work recognized internationally.



**The artwork
"Source"
of Amneville,
France**



The artwork
"Source" is unique
because of its
concept and its
dimensions.

It is a monumental
art installation on
a High Voltage
225 000 volts
transmission line
"Amnéville -
Montois" France.

Four towers and
1.5 kilometres of
the line are
transformed into
works of art.



"Source" is not only a unique work of art but it is a testimony of an artist's dream realized, a technical challenge overcome, accomplished.

It is the proof that we can create a pleasant environment and change the face of the planet.



10



11



12



13

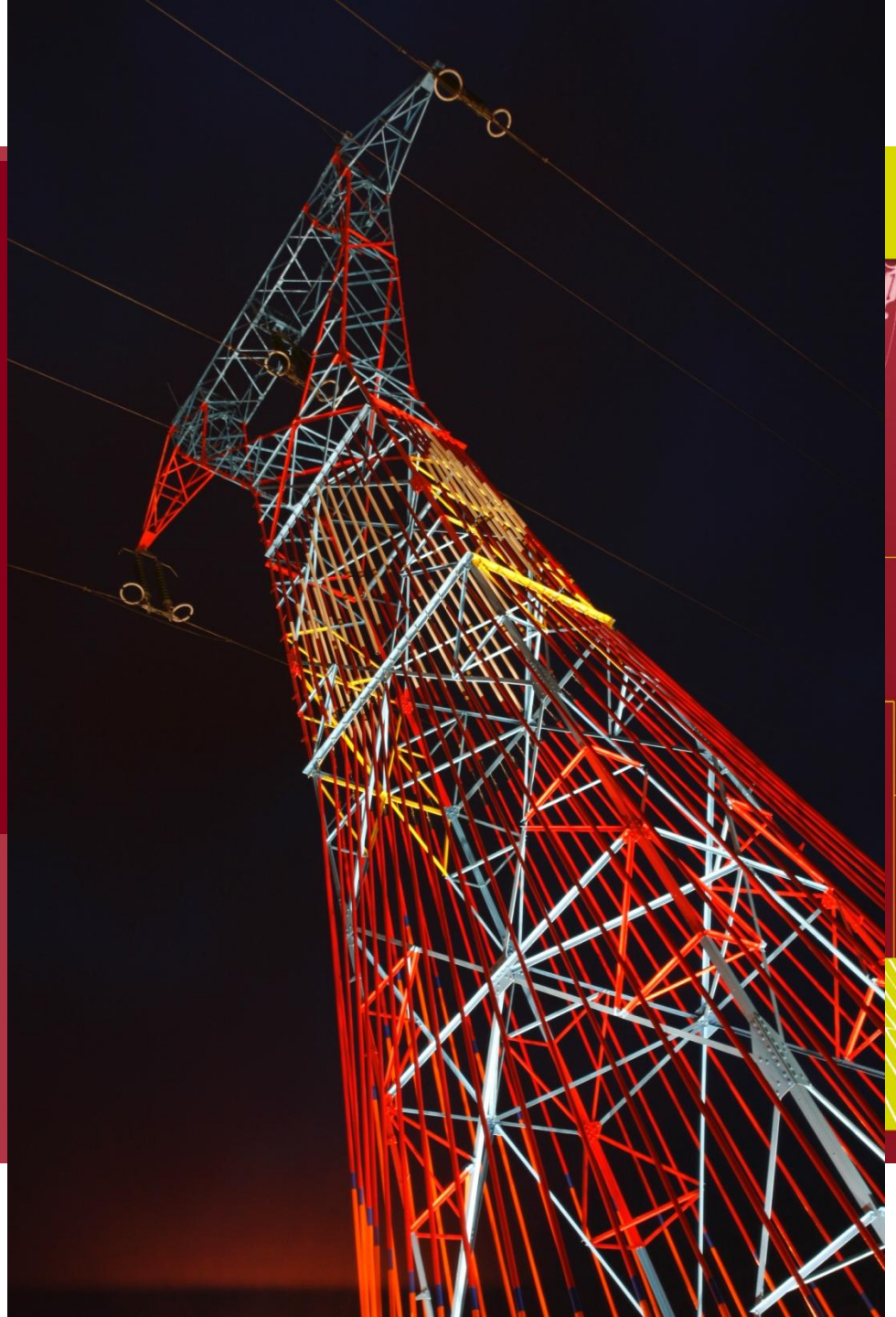
The Context

- *A power line built in the 50's.*
- *A spa and recreation site developed after 1970, with the line that goes through it.*
- *RTE and the City of Amneville's joint initiative to imagine a way to visually integrate the two entities, with the support of surrounding local authorities.*



The Project

The challenge was to set off the 4 towers at the center of the site by "dressing them up" in some ways so as to create a visual synergy with the other infrastructures there.



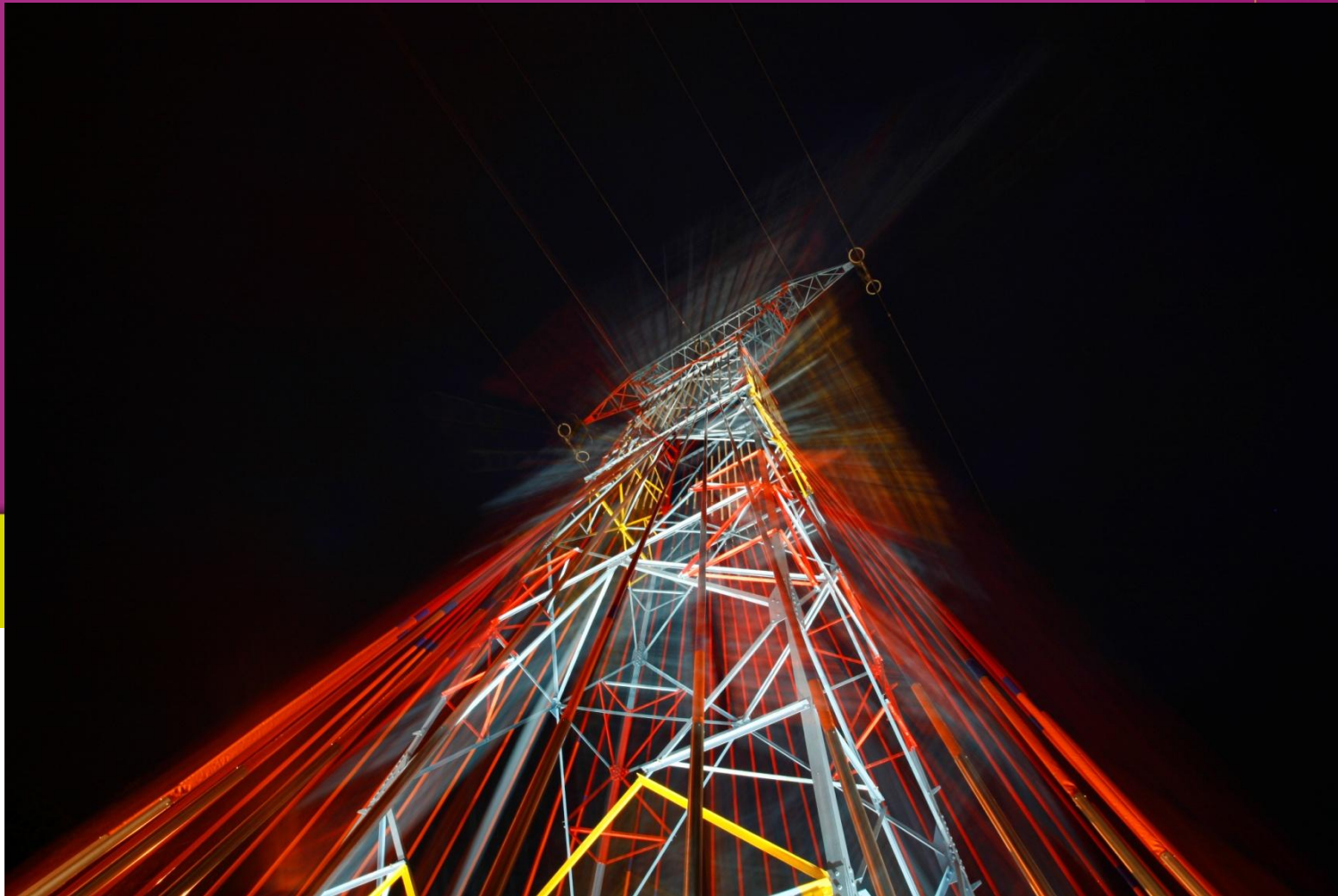
The Partnership

RTE and the City of Amneville worked together and this joint reflection led to the signing of an agreement which allowed the implementation of the project.



Art and Technique

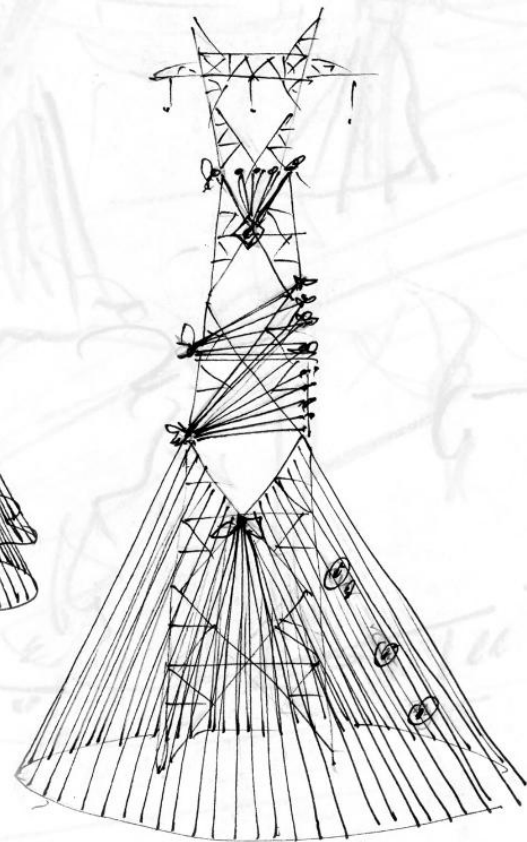
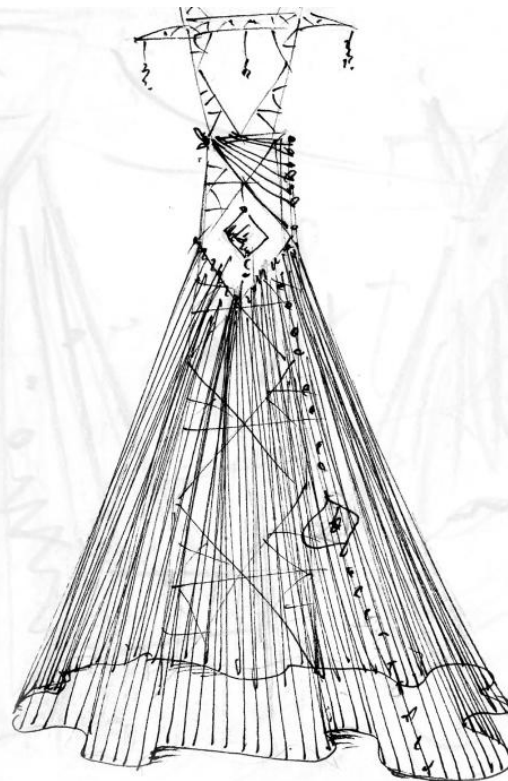
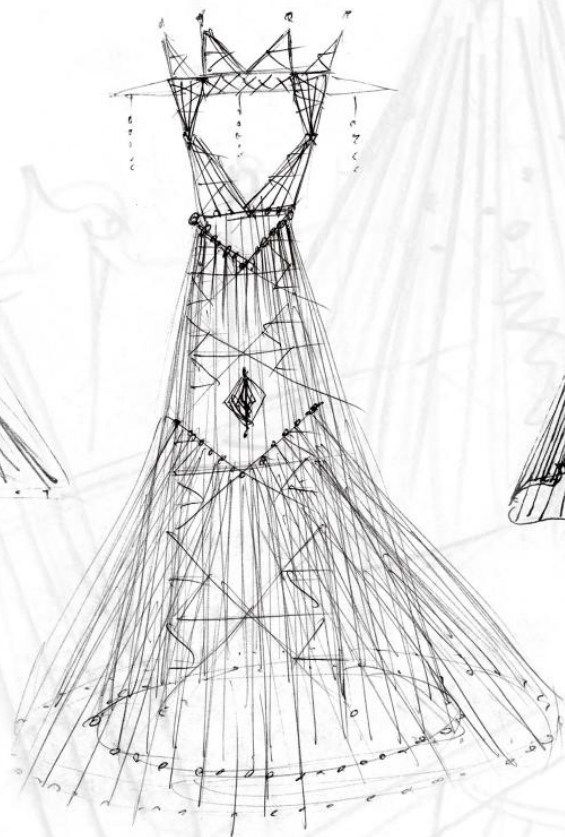
The recipient was the project entitled “Source” by the Bulgarian artist Elena Paroucheva.



Inspiration

- *Steel and power : the industrial heritage*
- *Spring water, the cradle of life : the local touch*
- *The towers at the heart of a gigantic sculpture : Art and aesthetics*





Installation Haute Tension "Source"

Planche d'évolution

Elena Paroucheva



"IHT Source"

Dimensions: 1255x34x28 mètres

Technique: Haubans, bandes et tubes en inox sur pylons de haute tension

Située: Centre thermique et touristique d'Amnéville les Thermes, France

Réalisation des travaux: Aout - Décembre 2003

Inauguration: 17.2.2004

Matériaux: Câbles en acier 3284m, haubans 2708m, bandes 525m, tubes en inox 576m, fixations 384

Auteur: Elena Paroucheva

Maitre d'ouvrage: RTE Est



Evolution de pylone N° 10 - "Source - lumière"



Evolution de pylone N° 11 - "Source - eau"



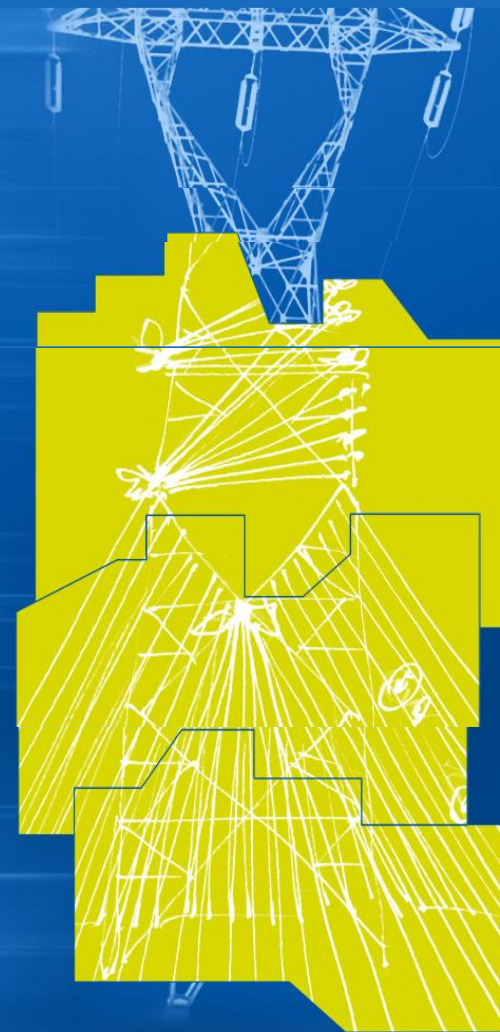
Evolution de pylone N° 12 - "Source - énergie"



Evolution de pylone N° 13 - "Source - flamme"

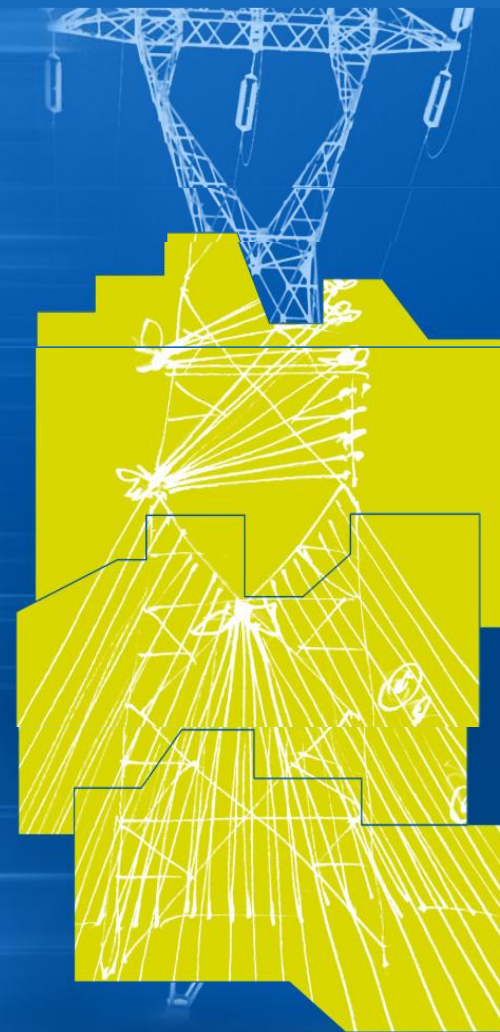
A Technical Challenge

- *18 months of research and studies*
- *Validation of the technical parameters to be applied, Choice of materials*
- *Measurements in relations to the security, durability and resilience of the installations.*



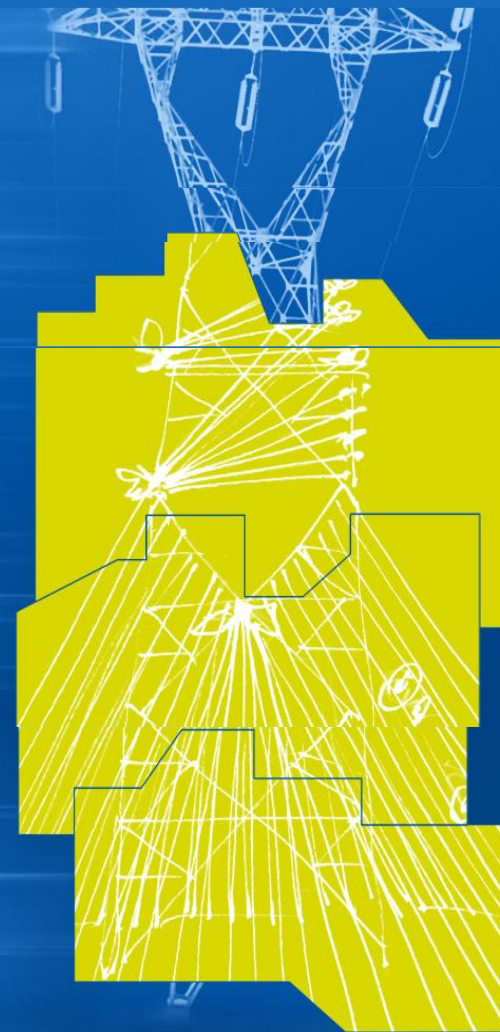
The Works

- *5 months work to complete the project under RTE's supervision.*
- *The supports have been painted and equipped with guy-ropes going all the way down.*
- *Each installation is illuminated with a monochrome light from underneath.*



Key Figures

- *4 towers respectively 27 and 33 meters*
- *3km of steel cable*
- *525 square meters of synthetic fabric*
- *576 stainless steel tubes*
- *384 holdfasts*





III 4) Recognitions:

- Since 2006, the monumental work "Source" is included in "The European archives of urban public space."



III 4) Recognitions:

- It is recognized by the Ministry of Culture as an important monument and since 2008 it is open to the public on the "European Heritage Days".



III 4) Recognitions:

- Guided tours are organized by the Tourist Office of Amneville in order to present the artwork “Source” to the visitors.



III 4) Recognitions:

- CIGRE (Conseil International des Grands Réseaux Electriques)

CIGRE's Sessions are an events of reference for the electrical industry. In Paris, 2008, CIGRE highlighted "SOURCE" and the work of Elena Paroucheva.



III 4) Recognitions:

- In 2009, the artwork "Source" is a laureate from the Competition « Science and Technology in European Art », organized by SUPELEC within the framework of the French Presidency of the European Union.



III 4) Recognitions:

- The artwork “Source” is presented in many exhibitions, congresses, conferences in France and abroad.



III 4) Recognitions:

- "Source" has been edited: books, calendars, postcards. It has been cited by many articles in the regional, national and international press as well as other media (TV, radio, internet ...).



III 5) The opinion of residents and visitors:

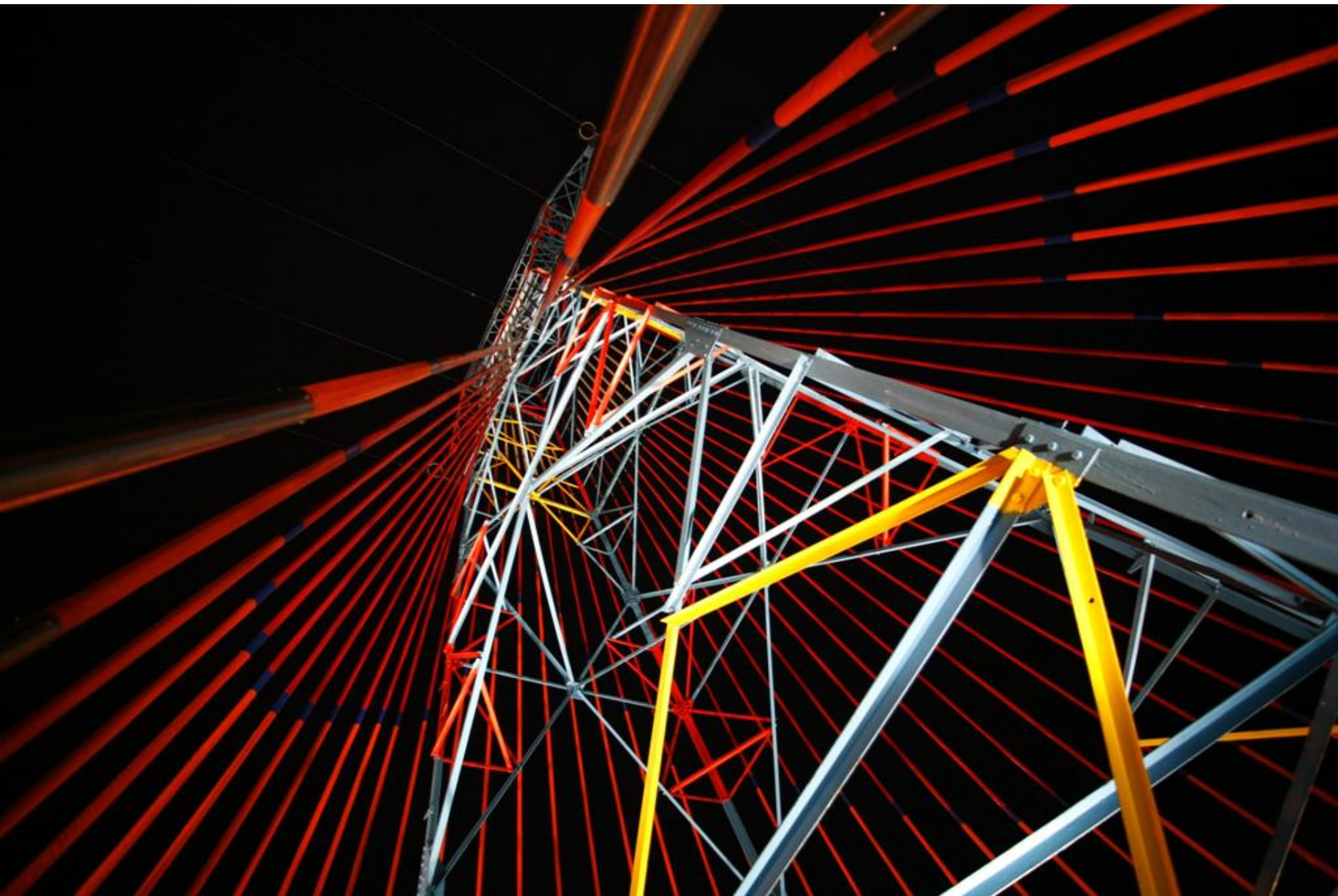
- **Before the artistic intervention**, the opinion was to remove the pylons from the heart of the thermal city.
- **At the onset of the artwork**, residents and visitors were enchanted by the illuminated ladies and many photos were taken of them in front of the pylons.
- **Now**, no one can imagine the 4 Amneville's pylons undressed.









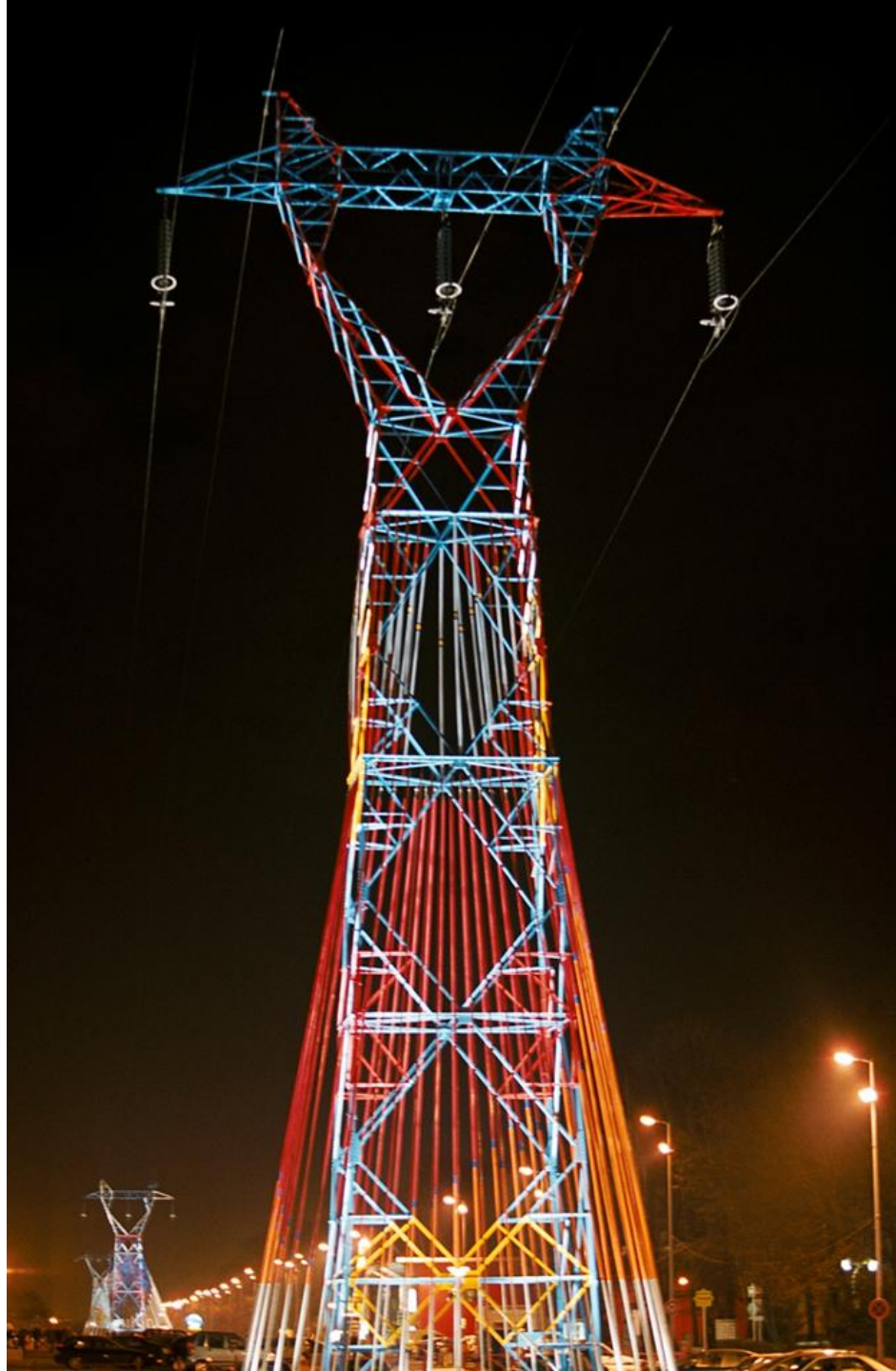


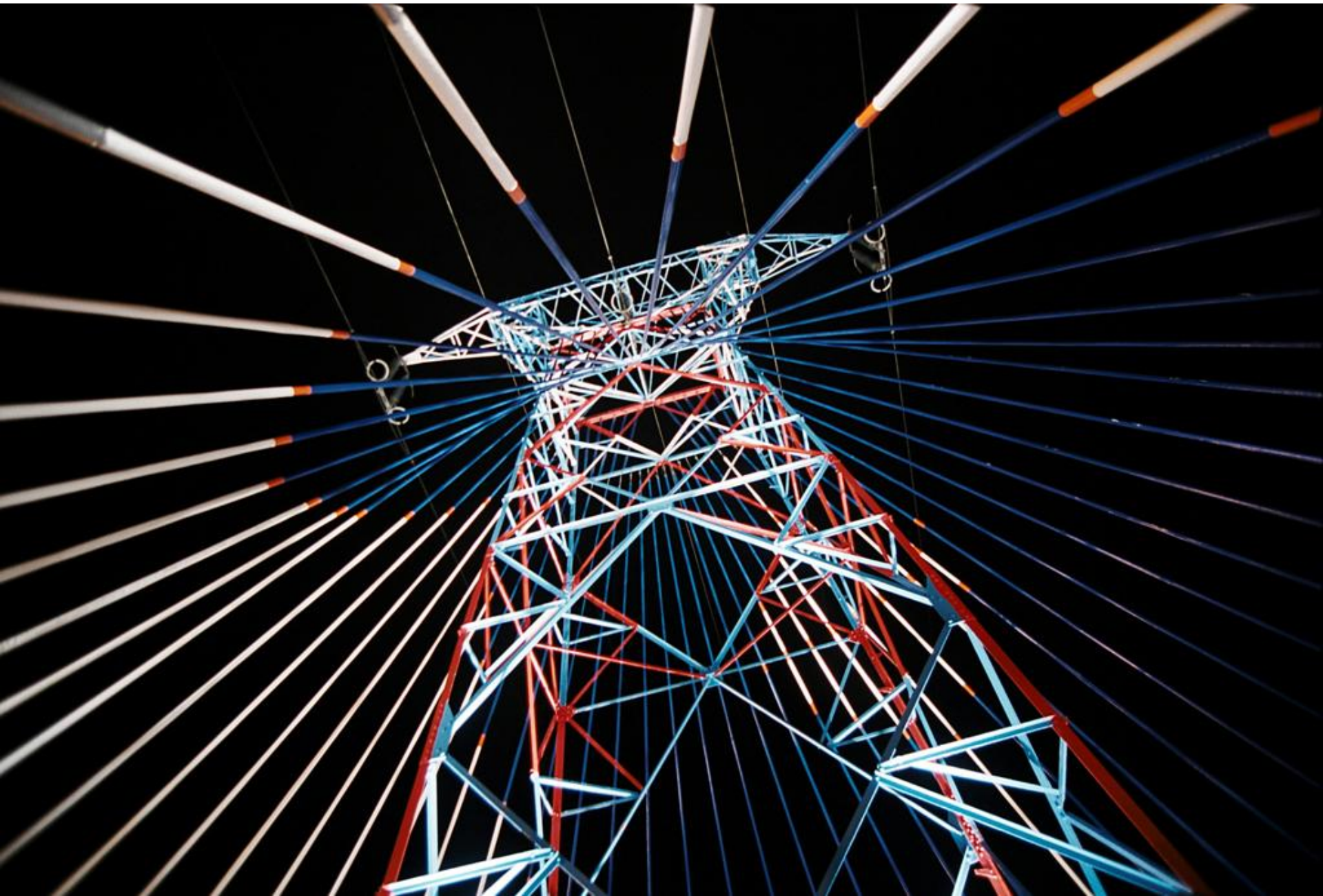


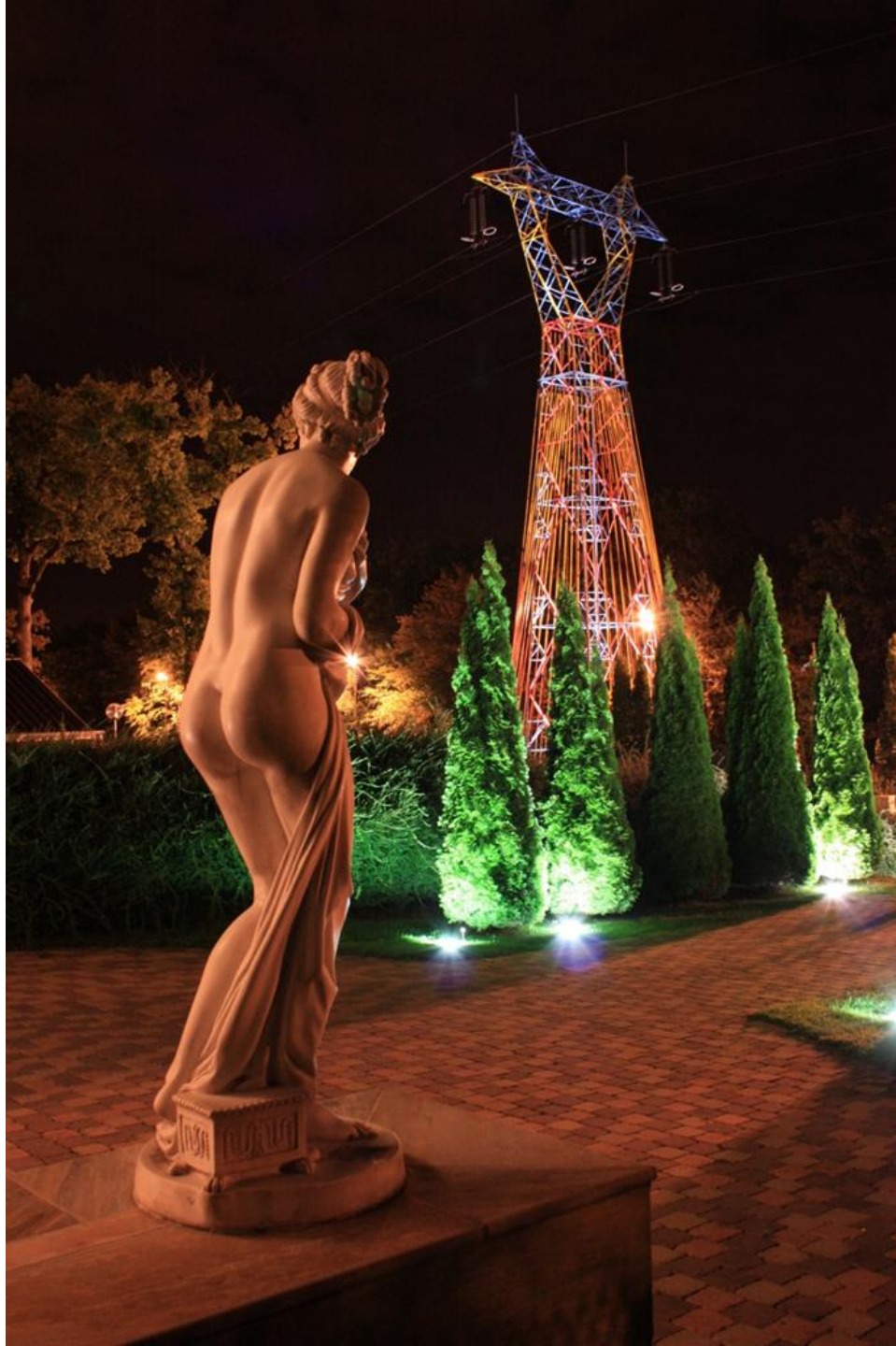




















IV What a tower-artwork can bring and to whom?

1) The introduction of pylons - artworks (such as wind energy supports, antennae, mast lighting ...) can be beneficial for the environment, the population, the city, the region, and also for the society that made it.



IV What a tower-artwork can bring and to whom?

- 2) Many **cases of failure** to pass a new line to be accepted or not, and it so, often many years later.

Propose a "sculpture – pylon" can unblock contracts. The line will be accepted by the local authorities and the population. Even more, it will be unique work of art that can attract visitors.



IV What a tower-artwork can bring and to whom?

2) **On replacement** of the old or broken towers: In urban areas and also in the natural landscape, a sculpture - tower will certainly be received with a more favourable view.



IV What a tower-artwork can bring and to whom?

3) Underground grids:

The networks in our time cross underground. But it is a long and expensive operation. In many places the lines can not go underground because of the nature of the ground.

Again pylons - artworks are an alternative.



IV What a tower-artwork can bring and to whom?

4) Accepting the pylons in urban areas:

With the current development of the population and overcrowding, the lines often come in urban areas.

It would be beneficial to think in terms of aesthetic aspect in the environment.



IV What a tower-artwork can bring and to whom?

5) Cultural recognition:

A step toward beautifying the environment can give recognition to the sponsoring company.



IV What a tower-artwork can bring and to whom?

6) Changing the vision:

Following my contact with many representatives of the electricity networks and mobile operators, I often hear: "Nobody wants our antennas, nobody wants our towers."

The man wants to have the comfort of energy, but prefer not to see it in the landscape neither towers, antennas, nor cables.

With a pylon - artwork that will bring the energy, don't have to be hidden or covered up in the infrastructure. On the contrary, we can be proud.



IV What a tower-artwork can bring and to whom?

7) Harmony between man and nature:

On route across the same type of towers, in all countries. They are introduced in the landscape without seeking liaison with the region, its history, its culture.

A pylon - artwork provides a message, it is personalized, humanized. It brings harmony between man and nature.



IV What a tower-artwork can bring and to whom?

8) Urban Art, Environmental Art:

If in our time, Urban art and Environmental Art are so popular, due to the fact that they are offering art to the public instead of closing it in art galleries solely for art amateurs. Here the art is seen by everyone and becomes part of its environment.

With the creation of sculpture towers, the company will assist in the development of art, it will be an active actor in our cultural life.



